

CONSPECTUS OF VEGETATION SYNTAXA IN SLOVENIA

Urban ŠILC¹ & Andraž ČARNI^{1,2}

Abstract

For the first time, an overview of plant communities in Slovenia is presented according to the Braun-Blanquet approach. In total 588 associations (and some communities classified into higher syntaxa) belonging to 51 classes have been registered in Slovenia. Additionally 149 syntaxa are mentioned as registered in the field or in the literature, but not documented with relevant material. Syntaxonomical classification is based on the “EuroChecklist” and includes also the Slovenian written definition of the high-rank syntaxa.

Key words: phytosociology, syntaxonomy, vegetation database.

Izvleček

Prvič je predstavljen pregled vseh rastlinskih združb v Sloveniji razvrščenih po Braun-Blanquetovem principu. Ugotovili smo 577 asociacij (in nekaj združb uvrščenih v višje sintakse), ki pripadajo 47 vegetacijskim razredom registriranim v Sloveniji. Dodatno smo izpostavili 126 sintaksonov, ki smo jih opazili v naravi ali pa so jih omenili v literaturi, niso pa dokumentirani s popisnim gradivom. Sintaksonomska klasifikacija sledi seznamu “EuroChecklist”, zato obenem predstavljamo tudi slovenske definicije višjih sintaksonov.

Ključne besede: fitocenologija, sintaksonomija, vegetacijska podatkovna baza.

1. INTRODUCTION

Vegetation science in Slovenia has a long and fruitful tradition beginning with the first studies by Gabrijel Tomažič in 1928 (Robič & Wraber 2001, Zupančič 2003). All major vegetation types have been targeted so far, yet there is a clear bias towards forest communities. The major reason is because phytosociology (in its narrow sense – devoted mainly to classification of plant communities) was traditionally linked to forestry, mapping, planning and management of forest resources. While forests had therefore been well researched, other vegetation types had not been paid attention to or had been completely neglected. This has changed only in the recent decade.

There were some attempts to compile a catalogue of vegetation syntaxa in Slovenia, yet again – these were very much biased towards forests.

Wraber (1960) made the first attempt in this direction. Smole (1988) published a catalogue of forest communities used in mapping projects in various research institutions in Slovenia. Robič & Accetto (2001) prepared a more extensive list of forest plant communities, comprising also some non-forest syntaxa used for education at the Department of Forestry and Renewable Forest Resources of the University of Ljubljana. Other plant community accounts featured “red lists” of endangered vegetation (Gregori et al. 1996) or, occasionally, syntaxonomic or nomenclatural revision of a single high-rank syntaxon (Marinček et al. 1993, Zupančič 1999, 2007, Surina et al. 2004, Šilc & Čarni 2007, Poldini 2009).

The vegetation database of Slovenia using Turboveg (Hennekens & Schaminée 2001) software enabled first a less biased insight into the vegetation research in Slovenia (Šilc 2006). Nu-

¹ Institute of Biology ZRC SAZU, Novi trg 2, SI - 1000 Ljubljana, Urban@zrc-sazu.si, Carni@zrc-sazu.si

² University of Nova Gorica, Vipavska 13, SI - 5000 Nova Gorica

merical analyses of the collected relevés revealed which plant communities were well studied (and represented in the data set) and where there were obvious gaps.

Surely, some ideas of placement of the syntaxa presented in this paper will be controversial because of lack of field data and divergence of opinions about their classification. Yet, being the first comprehensive list of all syntaxa documented or presumed to occur (on the basis of observed vegetation stands which might be classified within the latter) in Slovenia, this is a stepping stone towards a detailed, critical and comprehensive national vegetation survey as already finalized (or underway) in many European countries such as the Netherlands, Germany, Austria, Czech Republic, Slovakia, and elsewhere.

The aims of this paper study are: (1) to compile a list of syntaxa known from (or presumed to occur in) Slovenia, (2) to classify them within a system of European high-rank syntaxa as presented in the so-called “EuroChecklist” (Mucina et al., in prep.) (3) to point out the obvious problems and gaps in our knowledge of syntaxonomy of the Slovenian vegetation, and (4) to introduce Slovenian written definitions of the high-rank syntaxa.

2. METHODS

Vegetation database of Slovenia (Šilc 2006, 2012), where the majority of accessible (published and from grey literature) relevés from the territory of Slovenia are stored, was a starting point for compilation of the list. Therefore for syntaxa stored in the database, a number of relevés classified are presented. For certain syntaxa (e.g. macrophytic vegetation) that were not researched according to the Braun-Blanquet approach (van der Maarel 2005) in Slovenia we used floristic data to evaluate the possible presence of these vegetation communities. Some communities that were noticed in the field but are not documented by published relevés were added as unpublished. For these data we are grateful to several researchers who contributed their knowledge to earlier versions of the list, and are mentioned next to these unpublished data.

The hierarchy of syntaxa is also shown by codes. The first number indicates class, first letter order, second letter alliance and second number association. These codes are also used in the Turboveg database.

3. RESULTS AND DISCUSSION

The syntaxonomical scheme in general follows the synsystem of the so-called “EuroChecklist” of Mucina et al. (in prep.) down to alliance level and with modifications in some syntaxa that were already elaborated for the territory of Slovenia.

The present list of vegetation units follows the rules of the Code of Phytosociological Nomenclature, but some exceptions should be made to obtain information on the existence of some vegetation units that are not validly published. In Slovenia the idea of geographical division of vegetation communities was very alive, with three nominal classification and geographical races according to the modified system of Matuszkiewicz & Matuszkiewicz (1981). Some authors also neglected the rules of the Code and many names were kept in use, therefore we deliberately preserved those syntaxon names that will enable us to establish a starting point for syntaxonomical revisions of separate classes and vegetation as a whole on the basis of large database of relevés. We must take into consideration that in the Vegetation database of Slovenia (Šilc 2006, 2012) 86 % of relevés were classified into the synsystem by their authors and the rest also bear some information on the classification of plant communities.

The vegetation of Slovenia comprises 51 vegetation classes indicating great diversity (Figure 1). Classes with the largest number of syntaxa are *Molinio-Arrhenatheretea* and *Carpino-Fagetetea*. In both classes there are also a significant number of syntaxa that are not documented with relevés as they were only mentioned in some references. Another similar problem is represented by the vegetation of freshwater bodies that had been rarely investigated by the Braun-Blanquet method and the majority of syntaxa were introduced on the basis of floristic data. Three types of vegetation show also a high diversity of syntaxa and collected material: anthropogenic vegetation (classes *Stellarietea mediae*, *Artemisietea* and *Galio-Urticetea*), vegetation of rock crevices and rocks (classes *Asplenieta trichomanes* and *Thlaspietea rotundifoliae*) and vegetation of bogs and fens (classes *Scheuchzerio-Caricetea fuscae* and *Oxycocco-Sphagnetetea*).

The number of vegetation classes shows the high diversity of vegetation. The same is confirmed by the high number of associations and communities (588), nevertheless rather a high number of communities not documented (and

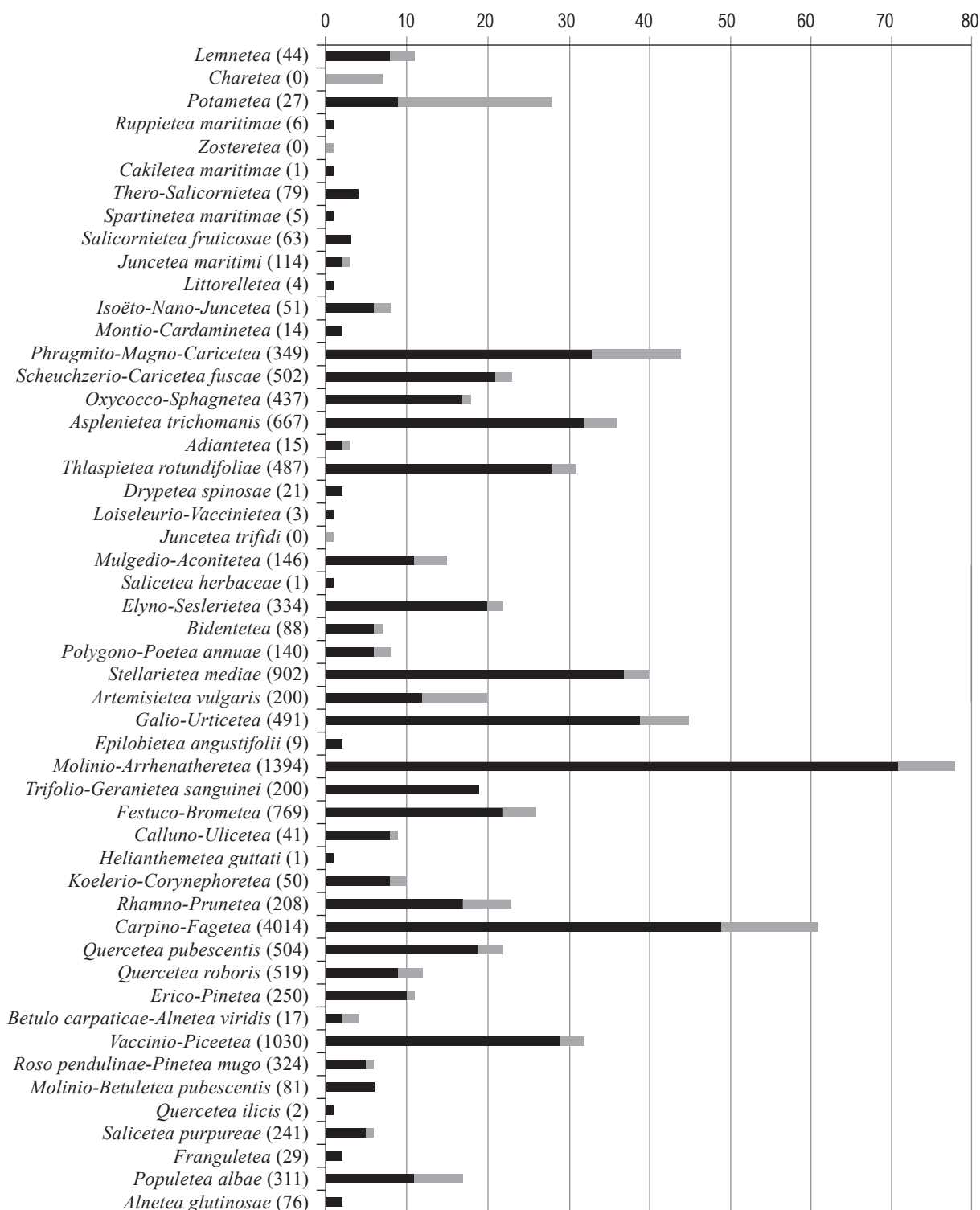


Figure 1: The number of syntaxa (associations and syntaxa on the rank of association) in different vegetation classes. The dark bar represents number of syntaxa supported by relevés and the grey bar the number of syntaxa mentioned as unpublished. The number of relevés is shown by the name of class in brackets.

Slika 1: Število sintaksonov (asociacij in sintaksonov na nivoju asociacije) v različnih vegetacijskih razredih. Temen del stolpca predstavlja število sintaksonov za katere obstaja popisno gradivo, sivi del pa število sintaksonov, ki jih v tekstu omenjamo kot neobjavljene. Število popisov je prikazano v oklepajih ob imenu razreda.

published) in the field by relevés (149) still points out the need for data collection and detailed, monographic treatments of some classes.

The list has been harmonized with the European checklist (Mucina et al. in prep) in order that the Slovenian classification would meet the common European standards and the syntaxa could be integrated into a wider framework. Therefore we amalgamated alliances *Carpinion orientalis* (*Ostryo-Carpinion orientalis*) and *Fraxino orni-Ostryion* that were traditionally treated as two alliances (Čarni et al. 2009). The classification of altimontane and subalpine spruce forests on the southern edge of their distribution in northern Slovenia is not clear, because the proportion of species from deciduous forests increases towards the south (Wallnöfer 1993). As this diversity is in major cases treated on the level of geographical races (Zupančič 1999) and according to numerical analysis of material originating from Slovenia (Čarni et al. in prep.), the classification of these associations i.e. *Adenostylo glabae-Picceteum* and *Seslerio-Piceetum* within the *Chysanthemo-Piceion* was accepted (Wallnöfer 1993). The floodplain riparian forests on nutrient-rich alluvial soils *Alno-Fraxinetalia* are subdivided into two alliances: *Alnion incanae* and *Alno-Quercion* that appears only in the (north)-eastern part of the country.

As already stated, the classification of vegetation could be done using different approaches and this system of classification is only one view over this subject. But it gives a kick off for future syntaxonomical analyses that will result in complete elaboration of the Vegetation of Slovenia based on relevé databases and modern numerical techniques.

4. ACKNOWLEDGEMENTS

We thank Igor Dakskobler, Mateja Germ, Petra Košir, Andrej Martinčič, Livio Poldini and many others for supplying us with valuable data on some communities and many comments on previous versions of the manuscript. Ladislav Mucina substantially improved our manuscript, and also allowed us to use the unpublished EuroChecklist. Tomaž Sajovic kindly checked the Slovenian translations. This project was funded from ARRS L1-6517.

5. REFERENCES

- Čarni, A., Košir, P., Karadžić, B., Matevski, V., Redžić, S. & Škvorc, Ž. 2009: Thermophilous deciduous forests in Southeastern Europe. *Plant Biosystems* 143: 1–13.
- Exner, A. 2007: *Piceetalia* Pawł. 1928. In: Willner, W. & Grabherr, G. (ed.): Die Wälder und Gebüsche Österreichs. 1. Textband. Elsevier, München, pp. 184–208.
- Gregori, J., Martinčič, A., Tarman, K., Urbanc-Berčič, O., Tome, D. & Zupančič, M. 1996: Narava Slovenije, stanje in perspektive: zbornik prispevkov o naravni dediščini Slovenije. Društvo ekologov Slovenije, Ljubljana, 424 p.
- Hennekens, S. M. & Schaminée, J. H. J. 2001: TURBOVEG, a comprehensive data base management system for vegetation data. *Journal of Vegetation Science* 12: 589–591.
- Kopecký, K. 1992: Syntaxonomische Klassifizierung von Pflanzengesellschaften unter Anwendung der deduktiven Methode. *Tuexenia* 12: 13–24.
- Maarel van der, E. 2005: *Vegetation ecology*. Blackwell, Malden, 359 p.
- Marinček, L., Mucina, L., Poldini, L., Zupančič, M., Dakskobler, I. & Accetto, M. 1993: Nomenklatorische Revision der Illyrischen Buchenwälder (Verband *Aremonio-Fagion*). *Studia geobotanica* 12: 121–135.
- Matuszkiewicz, W. & Matuszkiewicz, A. 1981: Das Prinzip der mehrdimensionalen Gliederung der Vegetationseinheiten, erlauchtet am Beispiel der Eichen-Hainbuchenwälder in Polen. Vaduz, Rinteln, 123–148 p.
- Mucina, L. et al. 2012: EuroChecklist, in prep.
- Poldini, L. 2009: La diversità vegetale del Carso fra Trieste e Gorizia. Lo stato dell'ambiente. Edizione Goliardiche, Trieste, 732 pp.
- Robič, D. & Accetto, M. 2001: Pregled sintaksonomskega sistema gozdnega in obgozdnega rastlinja Slovenije: gradivo za pouk fitocenologije. Biotehniška fakulteta, Oddelek za gozdarstvo in obnovljive gozdne vire, Ljubljana, 18 p.
- Robič, D. & Wraber, T. 2001: Življenje in delo botanika Gabrijela Tomažiča (1899–1977). *Hladnikia* 12: 7–21.
- Šilc, U. & Čarni, A. 2007: Formalized classification of weed vegetation of arable land in Slovenia. *Preslia* 79: 283–302.

- Šilc, U. 2006: Slovenian Phytosociology in a Database: state of the art, basic statistics and perspectives. *Hladnikia* 19: 27–34.
- Šilc, U. 2012: Vegetation database of Slovenia. *Biodiversity & Ecology* 4 (in print)
- Smole, I. 1988: Katalog gozdnih združb: pregled gozdnovegetacijskih raziskav po srednjeevropski fitocenološki metodi v Sloveniji s seznamom vseh doslej opisanih gozdnih združb ter njihova razvrstitev po medsebojni sorodnosti. Inštitut za gozdno in lesno gospodarstvo, Ljubljana, 154 p.
- Surina, B., Dakskobler, I., Kaligarič, M. & Seliškar, A. 2004: Seznam sintaksonov. In: Čušin, B. (ur.) & al.: *Natura 2000 v Sloveniji*. Rastline. Založba ZRC, Ljubljana, pp. 168–172.
- Wallnöffer, S. 1993: *Vaccinio-Piceetea*. In: Mucina, L., Grabherr, G. & Wallnöffer, S. (ed.): *Pflanzengesellschaften Österreichs-Wälder und Gebüsche*. Gustav Fisher Verlag, Jena, Stuttgart, New York, pp. 283–337.
- Wraber, M. 1960: Fitocenološka razčlenitev gozdne vegetacije v Sloveniji. In: Lazar, J. (ed.): *Ad annum horti botanici Labacensis solemnem*. Ljubljana, pp. 49–98.
- Zupančič, M. 1999: Smrekovi gozdovi Slovenije. Slovenska akademija znanosti in umetnosti, Ljubljana, 222 p.
- Zupančič, M. 2003: Vegetacijska raziskovanja in kartiranje v Sloveniji. *Zbornik gozdarstva in lesarstva* 72: 5–18.
- Zupančič, M. 2007: Syntaxonomic problems of the classes *Vaccinio-Piceetea* and *Erico-Pinetea* in Slovenia. *Fitosociologia* 44 (2): 3–13.
- Dakskobler, I. & Čušin, B. 2003: Rastlinstvo in rastje Dolenje Trebuše in njene okolice. *Trebuški zbornik*, Tolminski muzej, Tolmin, s. 99–132.
- Dakskobler, I. & Marinšek, A. 2009: Pregled jelovih rastišč v Sloveniji. *Zbornik gozdarstva in lesarstva* (Ljubljana) 89: 43–54.
- Dakskobler, I. 2004: Gozdna vegetacija Bovškega (Julijske Alpe, severozahodna Slovenija). *Hladnikia* 17: 25–38.
- Dakskobler, I. 2005: Rastlinstvo in rastje (flora in vegetacija) Baške doline (zahodna Slovenija). *Razprave* 4. razreda SAZU (Ljubljana) 46–2: 5–59.
- Exner, A. 2007: *Vaccinio-Piceetea* Br.-Bl. et al. 1939. In: Willner W. & Grabherr, G.: *Die Wälder und Gebüsche Österreichs*. Spektrum, München, pp.183–218.
- Franz, W. R. 2002: Die Hopfenbuche (*Ostrya carpinifolia* Scop.) in Österreich und Nord-Slowenien: (Morphologie, Anatomie, Verbreitung, Standort und Soziologie). *Carinthia* II, 1–256.
- Kaligarič, M. 2004: Podmorski travniki s pozejdonovko (*Posidonium oceanicae*) (EU_1120*). In: Jogan, N., Kotarac, M. & Lešnik, A. (ed.) 2004: *Opredelitev območij evropsko pomembnih ne-gozdnih habitatnih tipov s pomočjo razširjenosti značilnih rastlinskih vrst*. Center za kartografijo favne in flore, Ljubljana, pp. 34–39.
- Košir, Ž. 1994: Ekološke in fitocenološke razmere v gorskem in hribovitem jugozahodnem obrobju Panonije. Ministrstvo za kmetijstvo in gozdarstvo, Ljubljana, 149 p.
- Košir, Ž. 2000: Upoštevanje lastnosti gozdnih združb pri gospodarjenju s sečnimi ostanki. *Gozdarski vestnik* 58 (10): 439–445.
- Košir, Ž. 2007: Položaj gorskih bukovih gozdov v Sloveniji. *Gozdarski vestnik* 65: 365–392, 409–421.
- Košir, Ž. 2010: Lastnosti gozdnih združb kot osnova za gospodarjenje po meri narave. *Zveza gozdarskih društev Slovenije*, *Gozdarska založba*, Ljubljana, 288 p.
- Marinček, L. 1994: Zur Nomenklatur der Hainbuchenwälder des *Erythronio-Carpinion*. In: (ed.): *Simpozij-Pevalek Flora i vegetacija Hrvatske*. Čakovec, pp. 57–62.
- Marković, L. 1982: Ruderalna vegetacija ter vegetacija posek in gozdnih robov. In: Mayer, E. (ed.): *Vegetacijska karta Postojna L33–77*. Tolmač k vegetacijskim kartam. SAZU, *Razred za naravoslovne vede*, Biološki inštitut Jovana Hadžija, Ljubljana, pp. 96–112.

6. APPENDIX REFERENCES

- Accetto, M. 1999: Floristična in vegetacijska opazovanja v ostenjih severovzhodne Kostelske. *Gozdarski vestnik* 57: 3–22.
- Accetto, M. 2006: Nomenklatura notica k sintaksonskemu uvrščanju vlažnih dobovo-gabrovih gozdov. *Samozaložba*, Ljubljana, 6 p.
- Čarni A. et al. (in prep.) Smrekovi in jelovi gozdovi v Sloveniji.
- Čarni, A., Košir, P., Marinček, L., Marinšek, A., Šilc, U. & Zelnik, I. 2008: Komentar k vegetacijski karti gozdnih združb Slovenije v merilu 1:50.000 – list Murska Sobota. *Pomurska akademsko znanstvena unija – PAZU*, Murska Sobota, 64 p.

- Martinčič, A. & Leskovar, I. 2002: Vegetacija. In: Gaberščik, A. (ed.): Jezero, ki izginja: monografija o Cerkniskem jezeru. Društvo ekologov Slovenije, Ljubljana, pp. 81–94.
- Petkovšek, V. & Seliškar, A. 1979: Vegetacija na Planinskem polju in njeno varstvo. Varstvo narave 12: 13–32.
- Poldini, L. 1985: Note ai margini della vegetazione carsica. *Studia geobotanica* 5: 39–48.
- Seliškar, A., 1996: Traviščna in močvirna vegetacija. In: Gregori, J., Martinčič, A., Tarman, K., Urbanc-Berčič, O., Tome, D. & Zupančič, M. (eds.): Narava Slovenije, stanje in perspektive. Društvo ekologov Slovenije, Ljubljana, pp. 99–106.
- Seljak, G. 1974: Traviška vegetacija Porezna. Univerza v Ljubljani, Biotehniška fakulteta, Ljubljana, 103 p.
- Wallnöfer, S. 1993: *Vaccinio-Piceetea*. In: Mucina, L., Grabherr, G. & Wallnöfer, S. Die Pflanzengesellschaften Österreichs, Teil III, Wälder und Gebüsche, Gustav Fischer Verlag, Jena, pp. 283–337.
- Wraber, T. 1971: Contributo alla conoscenza della vegetazione pioniera (*Asplenietea rupestris* e *Thlaspietea rotundifolii*) delle Alpi Giulie. Università degli Studi di Trieste, Trieste, 81 p.

Received 11. 10. 2011
Revision received 14. 2. 2012
Accepted 2. 3. 2012

VEGETACIJA ACONALNIH RASTIŠČ

Vegetation of azonal habitats

VEGETACIJA CELINSKIH VODA

Vegetation of freshwater bodies

Lemnetea O. Bolòs & Masclans 1955

Prosto plavajoče združbe vodne leče v mirnih, s hranili razmeroma bogatih celinskih vodah v toplejših predelih Evrope
Free-floating duckweed communities of still, relatively nutrient-rich, fresh waters in warmer parts of Europe

Lemnetalia minoris O. de Bolòs & Masclans 1955

Vegetacija prosto plavajočih združb v mirnih, s hranili razmeroma bogatih celinskih vodah v Evropi
Vegetation of free-floating communities of still, relatively nutrient-rich, freshwaters of Europe

Lemnion minoris O. de Bolòs & Masclans 1955

Prosto plavajoče združbe vodne leče v mirnih, s hranili razmeroma bogatih celinskih vodah v toplejših predelih Evrope
Free-floating duckweed communities of still, relatively nutrient-rich, fresh waters in warmer parts of Europe

Lemnetum minoris Oberd. ex T. Müller & Görs 1960

Lemno-Spirodeletum minoris Oberd. ex T. Müller & Görs 1960

Lemnetum trisulcae Knapp & Stoffers 1962

Riccietum fluitantis Slavnić 1956

Wolffo-Lemnetum gibbae Bentham 1949

Spirodolo-Salvinietum natantis Slavnić 1952

Lemno-Spirodeletum polyrrhizae W. Koch 1954

Utricularion vulgaris Passarge 1964

Vegetacija prostoplavajočih mešink v mezotrofnih in evtrofnih vodah

Vegetation of free-floating communities of bladderworts in mesotrophic and eutrophic waters

Lemno-Utricularietum vulgaris Soó 1947

Hydrocharitium morsus-ranae (Passarge 1964) Westhoff et Den Held 1969

Vegetacija prostoplavajočih združb makrofitov v s hranili razmeroma bogatih vodah

Vegetation of free-floating communities of macrophytes in fairly nutrient-rich waters

Hydrocharitum morsus-ranae van Langendonck 1935

Stratiotetum alotidis Nowiński 1930

Ceratophylletum demersi Hild 1956

Charetea F. Fukarek ex Krausch 1964

Podvodne trate makroalg (parožic) Evrope

Submerged macro-algal (stonewort) swards of Europe

Charetalia hispidae Sauer ex Krausch 1964

Vegetacija podvodnih trat parožic v celinskih vodah Evrope

| | | | |
|---------|----------------|--|-------------------------------------|
| 01 | | | |
| 01A | | | |
| 01AA | | | |
| 01AA01 | 6 | | |
| 01AA02 | 11 | | |
| 01AA03 | 8 | | |
| 01AA04 | 4 | | |
| 01AA05 | unpubl. (Šilc) | | |
| 01AA06 | unpubl. (Šilc) | | |
| 01AA07 | unpubl. (Šilc) | | |
| 01AB | | | |
| 01AB 01 | 4 | | |
| 01AC | | | |
| 01AC01 | 5 | | |
| 01AC02 | 1 | | |
| 01AC03 | 5 | | |
| 02 | | | unpubl. (Martincič & Leskovar 2002) |
| 02A | | | |

- Vegetation of submerged stonewort swards of water bodies of Europe
Charion fragilis Krausch 1964
 Vegetacija podvodnih trat parožic v nevtralnih do bazičnih in s karbonati bogatih ali evtrofnih vodah
 Vegetation of submerged stonewort swards of neutral to alkaline and lime-rich or eutrophic waters
Charetum asperae Corillion 1957
Charetum contrariae Corillion 1957
Charetum tomentosae Corillion 1957
Charetum fragilis Fijałkowski 1960
Charetum vulgaris Corillion 1957
Nitellion flexilis Krause 1969
 Vegetacija podvodnih trat parožic v kislih do nevtralnih in s karbonati siromašnih vodah
 Vegetation of submerged stonewort swards of acidic to neutral and lime-poor waters
Charetum delicatulae Doll 1989
Nitellium opacae Corillion 1957
- Potametea Klika in Klika & Novák 1941**
 Vegetacija makrofitских združb zakorenjenih (plavajočih ali potopjenih) rastlin v mezo- in evtrofnih celinskih vodah Evrazije
 Vegetation of macrophyte communities of rooted (floating or submerged) plants of mesotrophic and eutrophic freshwaters of Eurasia
Callitricho-Batrachietalia Passarge 1978
 Vegetacija združb vkorenjenih makrofitov žabjega lasa, vodnih zlatic in rmancev v plitvih in včasih periodično suhих vodnih telesih Evrope
 Vegetation of crosswort, crowfoot and milfoil rooted macrophyte communities of shallow and sometimes periodically dry waterbodies of Europe
Batrachion fluitantis Neuhäusl 1959
 Vegetacija vkorenjenih makrofitских združb vodnih zlatic in rmanca v plitvih tekočih celinskih vodah Evrope
 Vegetation of crowfoot and milfoil rooted macrophyte communities of shallow moving freshwaters of Europe
Ranunculetum fluitantis Allorge 1922
Beruletum submersae Roll 1939
Callitricho hamulatae-Ranunculetum fluitantis Oberd. 1957
Ranunculo-Sietum erecto-submersi (Roll 1939) T. Müller 1962
Veronico beccabungae-Calitrichetum stagnalis (Oberd. 1957) T. Müller 1962
- Potamogetonetalia Koch 1926**
 Združbe zakorenjenih, plavajočih ali potopjenih makrofitov v mirnih mezo- in evtrofnih celinskih vodah Evrazije
 Communities of rooted, floating or submerged macrophytes of stagnant mesotrophic and eutrophic freshwaters of Eurasia
Nymphaeion albae Oberd. 1957
 Vegetacija zakorenjenih makrofitov s plavajočimi listi v mirnejših, s hranili bogatih celinskih vodah Evrope
 Vegetation of rooted macrophytes with floating leaves of sheltered nutrient-rich freshwaters of Europe
Limnanthemum nymphaeoidis Bellot 1951
Trapaetum natantis Kárpáti 1963
Nymphaeetum albo-luteae Nowinski 1928
Myriophylo-Nupharetum W. Koch 1926
Polygonum ambibitium comm.
- 02AA
 02AA01 unpubl. (Šilc)
 02AA02 unpubl. (Šilc)
 02AA03 unpubl. (Šilc)
 02AA04 unpubl. (Šilc)
 02AA05 unpubl. (Šilc)
 02AB
 02AB01 unpubl. (Šilc)
 02AB02 unpubl. (Šilc)
- 03
 03A
 03AA 5
 03AA01 1 unpubl. (Šilc)
 03AA02 unpubl. (Šilc)
 03AA03 unpubl. (Šilc)
 03AA04 unpubl. (Šilc)
 03AA05 unpubl. (Šilc)
 03B
 03BA
 03BA01 2
 03BA02 1
 03BA03 2
 03BA04 unpubl. (Šilc)
 03BA05 unpubl. (Šilc)

| | | | |
|--|--------|------------------------------------|--|
| Potamion Libbert 1931 | | | |
| Vegetacija zakoreninjenih in plavajočih makrofitnih združb dristavca in njemu podobnih vrst Evrazije | | | |
| Vegetation of rooted and floating macrophyte potamogetonid communities of Eurasia | | | |
| <i>Hottonietum palustris</i> R. Tx. 1937 | 03BB | 1 | |
| <i>Potamogetonum lucentis</i> Hueck 1931 | 03BB01 | 7 | |
| <i>Potamo perfoliati-Ranunculetum circinati</i> Sauer 1937 | 03BB02 | 1 | |
| <i>Potamogetonum filiformis</i> W. Koch 1928 | 03BB03 | 3 | |
| <i>Myriophyllo-Potamogetonum lucentis</i> Soó 1934 | 03BB04 | unpubl. (Šilc) | |
| <i>Ceratophyllo-Potamogetonum crispum</i> Horvatić in Micevski 1961 | 03BB05 | unpubl. (Šilc) | |
| <i>Ceratophylletum demersi</i> Hild 1956 | 03BB06 | unpubl. (Šilc) | |
| <i>Potamogetonum pectinati</i> Carstensen 1955 | 03BB07 | unpubl. (Šilc) | |
| <i>Najadatum marinae</i> Fukarek 1961 | 03BB08 | unpubl. (Martinič & Leskovar 2002) | |
| <i>Potamogetonum alpini</i> Podbielkowski 1967 | 03BB09 | unpubl. (Šilc) | |
| <i>Potamogetonum praelongum</i> Sauer 1937 | 03BB10 | unpubl. (Šilc) | |
| <i>Myriophylletum spicati</i> Soó 1927 | 03BB11 | unpubl. (Šilc) | |
| <i>Potamogeton pectinatus</i> comm. | 03BB12 | unpubl. (Šilc) | |
| <i>Potamogeton pusillus</i> comm. | 03BB13 | 1 | |
| <i>Potamogeton perfoliatus</i> comm. | 03BB14 | unpubl. (Šilc) | |
| <i>Potamogeton berchtoldii</i> comm. | 03BB15 | unpubl. (Šilc) | |
| <i>Potamogeton berchtoldii</i> comm. | 03BB16 | unpubl. (Šilc) | |
| Združbi s pripadnostjo razredu | | | |
| Other communities of the class | | | |
| <i>Potamogeton natans</i> - [<i>Potametea</i>] | 03XX01 | 3 | |
| <i>Elodea canadensis</i> - [<i>Potametea</i>] | 03XX02 | unpubl. (Šilc) | |
| | | | |
| VEGETACIJA OBALNIH BLATNIH RAVNIN IN BRAKIČNIH VODA | | | |
| Vegetation of coastal mud flats and brackish waters | | | |
| | | | |
| Zosteretea S. Pignatti 1953 | 04 | | |
| Travniki pozejdovke na blatnih in peščenih podlagah v morskem sublitoralu in evlitoralu | | | |
| Eel-grass swards on muddy and sandy substrates in the sea sublittoral and eulittoral zones | | | |
| Posidonetalia Den Hartog 1976 | 04A | | |
| Mediterranski travniki pozejdovke | | | |
| Mediterranean eel-grass swards | | | |
| Posidionion oceanicae Br.-Bl. 1933 | 04AA | | |
| Mediterranski travniki pozejdovke | | | |
| Mediterranean eel-grass swards | | | |
| <i>Posidonium oceanicae</i> Molimier 1958 | 04AA01 | unpubl. (Kaligarič 2004) | |

- Ruppiaetea maritimae** J. Tx. ex Den Hartog & Segal 1964
 Podvodne zakoreninjene združbe brakičnih voda
 Submerged rooted communities of brackish waters
Ruppialia J. Tx. ex Den Hartog & Segal 1964
 Podvodne zakoreninjene združbe brakičnih voda
 Submerged rooted communities of brackish waters
Ruppiaetea maritimae Br.-Bl. ex Westhoff in Bennema et al. 1943
 Podvodne zakoreninjene združbe brakičnih voda
 Submerged rooted communities of brackish waters
Ruppiaetea maritimae Hocquette 1927
- 05
 05A
 05AA
 05AA01 6
- VEGETACIJA SLANIŠČ, SIPIN IN MORSKIH KLIFOV**
 Vegetation of salt marshes, sand dunes and sea cliffs
- Cakiletea maritimae** R. Tx. & Preisig ex Br.-Bl. & R. Tx. 1952
 Pionirska vegetacija nitrofilnih enoletnic na robu peščenih in prodnatih morskih obrežij na obalah Atlanika, Sredozemlja in evksinske regije
 Pioneer vegetation of nitrophilous annuals on strandlines of sandy and shingle beaches of Atlantic, Mediterranean and Euxinic coasts
Euphorbietalia peplidis Tx. ex Rivas Goday et Rivas-Mart. 1958
 Halonitrofilna vegetacija na obrežjih Sredozemskega in Crnega morja
 Halo-nitrophilous strandline vegetation of the Mediterranean and Black Sea shores
Euphorbion peplidis R. Tx. ex Oberd. 1952
 Sredozemska in kantabrijsko-atlantska halonitrofilna obalna vegetacija
 Halo-nitrophilous Mediterranean and Cantabro-Atlantic strandline vegetation
Atriplici hastatae-Atriplicetum tataricae Lavrentiades 1963 nom. invers. propos.
 (syn. *Atriplicetum tatarici* Pignatti 1966)
- 06
 06AA
 06AA01 1
- Thero-Salicornietea** R. Tx. in R. Tx. & Oberd. 1958
 Pionirske združbe enoletnih sukulentnih slanaš na periodično ali občasno poplavljenih rastiščih
 Pioneer communities of annual succulent halophytes on periodically or occasionally flooded habitats
Thero-Salicornietalia S. Pignatti 1953
 Pionirske združbe enoletnih sukulentnih slanaš na periodično poplavljenih morskih rastiščih Atlanika in Sredozemlja
 Pioneer communities of annual succulent halophytes on periodically flooded marine habitats of the Atlantic Ocean and the Mediterranean
Thero-Salicornion Br.-Bl. 1933
 Sredozemske pionirske združbe osočnikov na muljastih poljih in lagunah
 Mediterranean pioneer saltwort communities of tidal flats and lagoons
Salicornietum venetae Pignatti 1966
Suedo-Salicornietum patulae Brullo & Funari ex Géhu & Géhu Franck 1984
- 07
 07A
 07AA01 39
 07AA02 21

| | | |
|--|--------|------------------------|
| <i>Suaeda maritima</i> - <i>Bassietum hirsutae</i> Br.-Bl. 1928 | 07AA03 | 17 |
| <i>Pholiuro-Spergularietum marginatae</i> Pignatti (1953) 1966 | 07AA04 | 2 |
| <i>Spartinetea maritima</i> Tx. in Beeftink 1962 | 08 | |
| Pionirska trajna vegetacija metliča v območju bibavice na mulju in pesku | | |
| Pioneer vegetation of perennial cord grasses on intertidal mud and sand | | |
| <i>Spartinetalia glabrae</i> Conard 1935 | 08A | |
| Pionirska trajna vegetacija metliča v območju bibavice na mulju in pesku | | |
| Pioneer vegetation of perennial cord grasses on intertidal mud and sand | | |
| <i>Spartinotum glabrae</i> Conard 1935 | 08AA | |
| Pionirska trajna vegetacija metliča v območju bibavice na mulju in pesku | | |
| Pioneer vegetation of perennial cord grasses on intertidal mud and sand | | |
| <i>Limonio-Spartinetum maritima</i> (Pignatti 1966) Beeftink & R. Tx. 1973 | 08AA01 | 5 |
| <i>Salicornietea fruticosae</i> Br.-Bl. & R. Tx. ex A. Bolòs y Vayreda 1950 | 09 | |
| Sredozemske in termo-atlantske trajne zelnate in polgrmičaste združbe na slanišjih | | |
| Mediterranean and thermo-atlantic perennial salt-marsh herblands and scrub | | |
| <i>Salicornietalia</i> Br.-Bl. 1933 | 09A | |
| Sredozemska in termo-atlantska halofilna polgrmišča sukulentnih metlikov v območju bibavice in celinskih občasno poplavljenih rastiščih | | |
| Mediterranean and thermo-atlantic halophilous coastal tidal and inland temporary flooded succulent chenopod scrub | | |
| <i>Salicornion fruticosae</i> Br.-Bl. 1933 | 09AA | |
| Sredozemska in termo-atlantska obalna vegetacija sukulentnih pritlikavih grmičastih metlikov v območju bibavice | | |
| Mediterranean and thermo-atlantic intertidal succulent dwarf chenopod scrub | | |
| <i>Puccinellio festuciformis-Arthrocnemum fruticosi</i> (Br.-Bl. 1928) Géhu 1976 | 09AA01 | 26 |
| <i>Limonio nar-bonensis-Artemisietum coerulecentis</i> Horvatić 1934 corr. Géhu & Biondi 1996 | 09AA02 | 19 |
| <i>Puccinellio festuciformis-Halimionietum portulacoidis</i> Géhu et al. 1992 | 09AA03 | 18 |
| <i>Juncetea maritimi</i> Br.-Bl. in Br.-Bl. et al. 1952 | 10 | |
| Trajna travišča in podobna zeliščno bogata vegetacija obmorskih in celinskih slanišč ter morskih klifov Sredozemlja, Atlantika in arktičnih oceanov | | |
| Perennial grasslands and related herb-rich vegetation of coastal and inland salt-marshes and sea-cliffs of the Mediterranean, Atlantic and Arctic Oceans | | |
| <i>Juncetalia maritimi</i> Br.-Bl. ex Horvatić 1934 | 10A | |
| Sredozemska in termo-atlantska visoka ločja slanih mokrišč | | |
| Mediterranean and thermo-atlantic tall-rush saline wetland vegetation | | |
| <i>Juncion maritimi</i> Br.-Bl. ex Horvatić 1934 | 10AA | |
| Sredozemska obmorska slana mokrišča z ločkovji | | |
| Mediterranean coastal tall-rush saline marshland vegetation | | |
| <i>Limonio nar-bonensis-Puccinellietum palustris</i> (Pignatti 1966) Géhu & Scopp. in Géhu et al. 1984 | 10AA01 | 87 |
| <i>Juncetum maritimi-acuti</i> Horvatić 1934 | 10AA02 | 27 |
| <i>Limonio nar-bonensis-Crithmetum maritimi</i> Gamper & Bacchetta 2001 | 10AA03 | unpubl. (Poldini 2009) |

VEGETACIJA IZVIROV, VODNIH BREGOV (OBREŽIJ) IN MOČVIRIJ
Vegetation of springs, shorelines and swamps

| | |
|--|-------------------------------------|
| Littorelletea Br.-Bl. & R. Tx. ex Westhoff et al. 1946 | 11 |
| Trate sita in združbe mešink v oligotrofnih vodah | |
| Hairgrass swards and bladderwort communities in oligotrophic waters | |
| Littorelletalia uniflorae W. Koch ex R. Tx. 1937 | 11A |
| Vegetacija trat sita in sorodnih združb v oligotrofnih, stoječih ali počasi tekočih vodah Holarktika | |
| Vegetation of hairgrass swards and related communities in oligothropic, standing or slow-flowing waters of the Holarctis | |
| Eleocharition acicularis Pietsch ex Dierssen 1975 | 11AA |
| Vegetacija amfibijskih rastlin (dvoživk) oligotrofnih in mezotrofnih voda z nihajočo gladino v zmernem in borealnem pasu Evrope | |
| Vegetation of amphibious plants in fluctuating shallow oligothropic and mesotrophic waters of temperate and boreal Europe | |
| Littorello lacustris-Eleocharitetum acicularis Jouanne 1925 | 11AA01 4 |
| Isoëto-Nano-Juncetea Br.-Bl. & R. Tx. ex Br.-Bl. et al. 1952 | 12 |
| Pionirska prehodna vegetacija pritlikavih ostričevk na periodično poplavljenih habitatih | |
| Pioneer ephemeral dwarf-cyperaceous vegetation on periodically flooded (freshwater) habitats | |
| Nanocyperetalia Klika 1935 | 12A |
| Pionirska prehodna poletno-jesenska vegetacija pritlikavih ostričevk na periodično poplavljenih tleh v zmernem pasu Evrope | |
| Pioneer ephemeral summer-autumn vegetation on periodically flooded soils of temperate Europe | |
| Nanocyperion W. Koch 1926 | 12AA 1 |
| Pionirska vegetacija pritlikavih ostričevk na občasno poplavljenih in s hranili siromašnih rastiščih v srednji in zahodni Evropi | |
| Pioneer dwarf-cyperaceous vegetation of temporarily flooded nutrient-poor habitats of Central and Western Europe | |
| Polygono-Heleocharietum ovatae Egger 1933 | 12AA01 18 |
| Heleocharito acicularis-Limoselletum aquaticae Wendelberger-Zelinka 1952 | 12AA02 6 |
| Dichostyloido micheliani-Gnaphalietum uliginosae Timár 1947 | 12AA03 4 |
| (syn. <i>Lindernio-Dichostyletum micheliani</i> Slavnić 1951) | |
| Polygono avicularis-Plantagnetum intermediae Seliškar in Trpin et al. 1995 | 12AA04 10 |
| Cyperetum flavescens W. Koch 1926 | 12AA05 unpubl. (Surina et al. 2004) |
| Eleocharito-Caricetum bohemicae Klika 1935 | 12AA06 unpubl. (Surina et al. 2004) |
| (incl. <i>Lindernio-Eleocharitetum ovatae</i> Pietsch 1973) | |
| Združbi s pripadnostjo razredu | |
| Other communities of the class | |
| Cyperus fuscus-[Isoëto-Nano-Juncetea] | 12XX01 2 |
| Plantago intermedia-[Isoëto-Nano-Juncetea] | 12XX02 10 |

Montio-Cardaminetea Br.-Bl. & Tx. ex Klika & Hadač 1944

Vegetacija hladnih izvirov, običajno prevladujejo mahovi
Vegetation of cold springs, commonly dominated by bryophytes

| | |
|--|---|
| <i>Cardamino-Chrysosplenetalia Hinterlang 1992</i> | 13A |
| Vegetacija izvirov mehke vode v senčnih gozdnih habitatih od nižin do gorskega pasu v srednji in severozahodni Evropi | |
| Vegetation of soft-water springs in shady forest habitats in the sub-montane and montane belts of Central European mountains | |
| <i>Caricion remotae Kästner 1941</i> | 13AA |
| Združbe blatnih in senčnih izvirov v okviru gozdov od nižin do gorskega pasu v srednji in severozahodni Evropi | |
| Communities of muddy, shady water-springs in forested habitats from lowland up to the montane belt of Central and north-west Europe | 13AA01 unpubl. (Čarni) |
| <i>Cardamino-Chrysosplenetium alternifolii</i> Mass 1959 em. Zechmeister 1993 | 13B |
| <i>Montio-Cardaminetalia Pawlowski et al. 1928</i> | |
| Vegetacija hladnih, oligotrofnih izvirov v območju mešnih gozdov in iglastih gozdov in v oromediteranskem pasu Evrope | |
| Vegetation of cold, oligotrophic water-springs of the nemoral and boreal zones, and of oro-mediterranean mountain belt of Europe | |
| <i>Cratoneurion commutati Koch 1928</i> | 13BA |
| Z mahovi bogata vegetacija apnenčastih izvirov v zgornjem montanskem in subalpskem pasu Evrope | |
| Moss-rich vegetation of calcareous springs in supramontane and subalpine belts of Europe | 13BA01 12 |
| <i>Cratoneuretum falcati</i> Gams 1927 | 13BA02 2 |
| <i>Cratoneuretum commutati</i> Aichinger 1933 | |
| <i>Phragmito-Magno-Caricetea Klika in Klika & Novák 1941</i> | 14 |
| Vegetacija trstičij, šajšij in zelišč ob celinskih ali brakičnih vodah in vodotokih v Evraziji | |
| Reed swamp, sedge bed and hermland vegetation of freshwater or brackish water bodies and streams of Eurasia | |
| <i>Phragmitetalia Koch 1926</i> | 14A |
| Trstičja, šajša in zelišča mezo do evtrofnih stoječih ali počasi tekočih celinskih ali brakičnih vodnih teles v Evraziji | |
| Reeds, sedge beds and herblands of mesotrophic and eutrophic stagnating or slowly flowing freshwater or brackish water bodies of Eurasia | |
| <i>Phragmition communis Koch 1926</i> | 14AA |
| Močvirska trstičja v mezo- do evtrofnih stoječih celinskih vodah ali počasi tekočih vodotokih | |
| Reed swamp vegetation of mesotrophic and eutrophic standing freshwater bodies or gently moving streams | |
| <i>Phragmitetum vulgare</i> von Soó 1927 | 14AA01 49 |
| <i>Scirpetum lacustris</i> Chouard 1924 | 14AA02 6 |
| <i>Typhetum angustifoliae</i> Pignatti 1953 | 14AA03 5 |
| <i>Typhetum latifoliae</i> Lang 1973 | 14AA04 9 |
| <i>Glycerietum aquaticae</i> Hueck 1931 | 14AA05 5 |
| <i>Acoretum calami</i> Schulz 1941 | 14AA06 4 |
| <i>Equisetum limosi</i> Steffen 1931 | 14AA07 unpubl. (Martinič & Leskovar 2002) |
| <i>Leersietum oryzoidis</i> Egler 1933 | 14AA08 10 |
| <i>Sparganietum erecti</i> Roll 1938 | 14AA09 11 |
| <i>Butometum umbellati</i> Konczak 1968 | 14AA10 1 |
| <i>Rorippo amphibibiae-Eleocharitetum acicularis</i> Martinčič 2002 | 14AA11 30 |
| <i>Scirpetum maritimi</i> Van Langendonck 1931 | 14AA12 11 |
| <i>Typhetum shuttleworthii</i> Soó 1927 | 14AA13 15 |
| <i>Cicuto-Caricetum pseudocyperi</i> Boer & Sissingh in Boer 1942 | 14AA14 unpubl. (Seliškar 1996) |
| <i>Phragmiti-Typhetum minimae</i> Trinajstić 1964 nom. nud. | 14AA15 unpubl. (Čarni) |

| | |
|---|--|
| Magno-Caricetalia Pignatti 1953 | 14B |
| Močvirna vegetacija šašev v zmernem in borealnem pasu Evrazije | |
| Sedge bed marsh vegetation of boreal and temperate Eurasia | |
| Magno-Caricion elatae Koch 1926 | 14BA |
| Močvirna vegetacija šašev s prevladujočimi šopastimi šasi na s hranili bogatih glinastih tleh zmernega pasu Evrope (rastišča so dalj časa poplavljena in poleti ni sušnega obdobja) | |
| Sedge bed marsh vegetation dominated by tussock sedges on nutrient-rich clayey soils of temperate Europe | |
| <i>Caricetum elatae</i> Koch 1926 | 14BA01 35 |
| <i>Mariscetum serrati</i> Zobrist 1935 | 14BA02 15 |
| <i>Caricetum acutiformis</i> Egger 1933 | 14BA03 unpubl. (Šilc) |
| <i>Caricetum paradoxae</i> Aszód 1936 | 14BA04 1 |
| <i>Caricetum paniculatae</i> Wangerin ex von Rochow 1951 | 14BA05 4 |
| <i>Galio palustri-Caricetum rostratae</i> Martinčić & Seliškar 2004 | 14BA06 19 |
| <i>Euphorbio villosae-Cladietum marisci</i> Accetto 2001 | 14BA07 1 |
| Magno-Caricion gracilis Géhu 1961 | 14BB |
| Močvirna vegetacija šašev na s hranili bogatih glinastih tleh zmernega pasu Evrope | |
| Sedge bed marsh vegetation on nutrient-rich clayey soils of temperate Europe | |
| <i>Caricetum gracilis</i> Almquist 1929 | 14BB01 52 |
| <i>Caricetum vesicariae</i> Chouard 1924 | 14BB02 5 |
| <i>Galio palustri-Caricetum ripariae</i> Bal.-Tul. et al. 1993 | 14BB03 2 |
| <i>Phalaridetum arundinaceae</i> Libbert 1931 | 14BB04 15 |
| <i>Eleocharitetum palustris</i> Ubrisz 1948 | 14BB05 2 |
| <i>Filipendulo-Caricetum randalpiniae</i> Stanić 2009 | 14BB06 7 |
| <i>Caricetum tricotato-vulpinae</i> Horvatić 1930 | 14BB07 12 |
| <i>Caricetum vulpinae</i> Soó 1927 | 14BB08 unpubl. (Šilc) |
| <i>Ranunculus sardous-Agrostis canina</i> comm. | 14BB09 1 |
| Carici-Rumicion hydrolopathi Passarge 1964 | 14BC |
| Zeliščna vegetacija na nestabilnih organskih substratih v mezotrofnih vodah zmernega in borealnega pasu Evrazije | |
| Herbland vegetation of unstabilized organic substrates in mesotrophic waters of boreal and temperate Eurasias | |
| <i>Oenanthe aquaticae-Roripetum amphibiae</i> Lohm. 1950 | 14BC01 4 |
| <i>Sagittario-Sparganietum emersi</i> R. Tx. 1953 | 14BC02 1 |
| <i>Eleocharito palustri-Hippuridetum vulgaris</i> Passarge 1955 | 14BC03 unpubl. (Martinčić & Leskovar 2002) |
| <i>Scirpetum radicans</i> Hejný in Hejný & Husák 1978 | 14BC04 2 |
| Združba s pripadnostjo redu | |
| Other community of the order | |
| <i>Sium latifolium-[Phragmitetalia]</i> | 14BX01 unpubl. (Martinčić & Leskovar 2002) |
| Nasturtio-Glycerietalia S. Pignatti 1953 | 14C |
| Zelišča in šasi ob relativno dobro prezračenih celinskih tekočih vodah zmernega in sredozemskega dela Evrope in Madeira | |
| Herblands and sedge beds along relatively well oxygenated freshwater flowing streams of temperate and Mediterranean Europe and Madeira | |
| Glycerio-Sparganion Br.-Bl. & Sissingh in de Boer 1942 | 14CA |

| | | |
|---|--------|-------------------------------------|
| Zeliščna vegetacija ob manjših vodotokih in plitvih vodnih telesih zmernega pasu Evrope | | |
| Herbland vegetation along small freshwater streams and in shallow water bodies of temperate Europe | | |
| <i>Glycerietum fluitantis</i> Egglér 1933 | 14CA01 | 7 |
| <i>Glycerietum plicatae</i> Kulczyński 1928 | 14CA02 | 1 |
| <i>Nasturtietum officinalis</i> Seibert 1962 | 14CA03 | 4 |
| <i>Scirpo-Sparganietum</i> Petkovšek & Seliškar 1979 nom. nud. | 14CA04 | unpubl. (Petkovšek & Seliškar 1979) |
| <i>Cardamino amarae-Beruletum erecti</i> Turonova 1985 | 14CA05 | unpubl. (Šilc) |
| <i>Veronica beccabunga</i> comm. | 14CA06 | unpubl. (Šilc) |
| <i>Phalaridion arundinaceae</i> Kopecký 1961 | 14CB | |
| Vegetacija trstičja (pisanke) ob celinskih tekočih in sezonsko nihajočih vodotokih zmernega pasu Evrope | | |
| Reed vegetation along freshwater flowing and seasonally fluctuating streams of temperate Europe | | |
| <i>Rorippo-Phalaridietum</i> Kopecký 1961 | 14CB01 | 3 |

VEGETACIJA NIZKIH IN VISOKIH BARIJ TER MOČVIRIJ Vegetation of the bogs and fens

***Scheuchzerio palustris-Caricetea nigrae* Tx. 1937 nom. mut.**

Vegetacija prehodnih barj

Vegetation of transitional mires, fens and bog hollows

***Scheuchzerietalia palustris* Nordhagen ex Tx. 1937**

Barja z nizkimi šaši, ki se razvijejo na oligotrofnih do oligomezotrofnih šotičih

Small-sedge mires developing on oligotrophic and oligo-mesotrophic peats

***Rhynchosporion albae* Koch 1926**

Vegetacija stoječih, kisljih, distrofičnih voda v vodnih očesih na šotnih barjih z globoko šoto

Vegetation of stagnant, acid, dystrophic waters in pools of Sphagnum bogs on deep peats

Caricetum limosae Osvald 1923

Sphagno tenelli-Rhynchosporietum albae Osvald 1923

(syn. *Rhynchosporietum albae* W. Koch 1926, *Rhynchosporietum fuscae* (Paul & Lutz 1941) Braun 1968)

Drosero-Caricetum echinatae Horvat (1950) 1962

***Caricion lasiocarpae* Vanden Berghen in Lebrun et al. 1949**

Mezotrofna barja s šaši vlažnih rastišč na šotnih in mineralnih tleh

Mesotrophic sedge fens of wet sites on peat and mineral soils

Caricetum lasiocarpae Osvald 1923

Združba s pripadnostjo redu

Other community of the order

Scheuchzerietalia palustris- [*Scheuchzerietalia palustris*]

***Caricetalia davallianae* Br.-Bl. 1949**

Vegetacija nizkih barj z nizkimi šaši na oligomezotrofnih apnenčastih barjanskih tleh v izvirih in na nizkih barjih

Small-sedge rich-fen vegetation of oligo-mesotrophic calcareous peaty soils in springs and shallow fens

Caricion davallianae Klika 1934

- Vegetacija nizkih barjz s nizkimi šaši ob apnenčastih oligotrofnih potokih, soligenih barjih in močvirjih na sipinah v nižinah
 Small-sedge rich-fen vegetation of calcareous oligotrophic flushes, soligenous mires and dune slacks at low altitudes
- | | |
|---|------------------------------|
| <i>Caricetum rostratae</i> Osvald 1923 | 15BA |
| <i>Schoenetum ferruginei</i> Du Rietz 1925 | 15BA01 53 |
| (syn. <i>Primulo-Schoenetum ferruginei</i> Oberd. (1957) 1962) | 15BA02 106 |
| <i>Junco obtusiflori-Schoenetum nigricantis</i> Allorge 1921 | |
| (syn. <i>Schoenetum nigricantis</i> W. Koch 1926) | 15BA03 29 |
| <i>Caricetum davallianae</i> Dutoit 1924 | 15BA04 35 |
| <i>Eleocharitetum pauciflorae</i> Lüdi 1921 | 15BA05 8 |
| <i>Eriophoro-Caricetum paniceae</i> Horvat ex Trinajstić 2002 | 15BA06 9 |
| <i>Drepanolado revolutis-Trichophoretum cespitosi</i> Nordhagen 1928 | 15BA07 10 |
| <i>Trichophoretum alpini</i> Braun (1961) 1968 | 15BA08 3 |
| <i>Amblystegio stellati-Caricetum dioicae</i> Osvald 1925 | 15BA09 8 |
| (syn. <i>Parnassio-Caricetum nigrae</i> Oberd. 1957, <i>Caricetum dioicae</i> Braun 1968) | 15BA12 4 |
| <i>Astrantio carniolicae-Schoenetum nigricantis</i> Daksobler 2010 nom. inval. | 15BA10 unpubl. (Seljak 1974) |
| <i>Molinio coerulacae-Caricetum hostianae</i> Trinajstić 2002 | 15BA11 unpubl. (Čarni) |
| <i>Carici-Blysmetum compressi</i> Egger 1933 | 15C |

Caricetalia nigrae W. Koch 1926 nom. mut.

Barja na mezotrofni in oligotrofni šoti in šotnih mineralnih tleh

Mires developing on mesotrophic and oligomesotrophic peats and peaty mineral soils

Caricion canescenti-nigrae Nordhagen 1937 nom. mut.

Močvirja s prevladujočimi šaši in zelišči na nekarbonatnih tleh v zmernem delu Evrope in na višjih nadmorskih višinah v Sredozemlju

Fen meadows with dominating sedges and forbs on non-calcareous soils of temperate Europe and high-altitudes of the Mediterranean

- | | |
|---|-----------|
| <i>Caricetum goodenowii</i> Braun 1915 | 15CA01 6 |
| <i>Eriophoretum scheuchzeri</i> Rübél 1912 | 15CA02 1 |
| Združbe s pripadnostjo razredu | |
| Other communities of the class | |
| <i>Carex hostiana</i> -[<i>Scheuchzerio-Caricetea nigrae</i>] | 15XX01 6 |
| <i>Carex panicea</i> -[<i>Scheuchzerio-Caricetea nigrae</i>] | 15XX02 5 |
| <i>Eriophorum angustifolium</i> -[<i>Scheuchzerio-Caricetea nigrae</i>] | 15XX03 15 |
| <i>Potentilla palustris</i> -[<i>Scheuchzerio-Caricetea nigrae</i>] | 15XX04 9 |

Oxycocco-Sphagneteta Br.-Bl. & R. Tx. ex Westhoff et al. 1946

Holarктиčna ombrotrofna barja in mokre resave na kisljih tleh

Holarctic ombrotrophic bogs and wet heathlands on acidic soils

Sphagnetalia medii Kästner & Flöbner 1933

Barjanske in oligotrofne združbe na višjih nadmorskih višinah in večjih geografskih širinah Evrazije

Bog and oligotrophic fen communities of higher altitudes and high latitudes of Eurasia

| | | |
|---|--------|--------------------|
| Sphagnion medii Kästner & Flössner 1933 | 16AA | |
| Barja subcelinskih in gorskih območij od montanskega pasu do sredozemskega in borealnega območja Evrazije | | |
| Bogs of sub-continental and montane regions from the mountain belt spanning the mediterranean and boreal regions of Eurasia | | |
| <i>Carici rostratae-Sphagnetum Martinič & Piskernik ex Martinič & Seliškar 2004</i> | 16AA01 | 38 |
| <i>Piceo-Sphagnetum flexuosi</i> Kutnar & Martinič 2002 | 16AA02 | 24 |
| <i>Calluno-Sphagnetum Martinič 1987 corr. 2002</i> | 16AA03 | 31 |
| <i>Rhynchosporo albae-Sphagnetum tenelli</i> Martinič & Piskernik 1985 nom. nud. | 16AA04 | 25 |
| <i>Eriophoro-Trichophoretum cespitosi</i> (Zlatnik 1928, Rudolph et al. 1928) Rübhel 1933 | 16AA05 | 34 |
| <i>Carici limosae-Sphagnetum Martinič 1997</i> | 16AA06 | 62 |
| (syn. <i>Sphagno-Caricetum limosae</i> Martinič & Piskernik 1985) | | |
| <i>Sphagno-Pinetum mugo</i> (Kästner & Flössner 1933) Kuoch 1954 corr. Zupancič & Žagar 2007 | 16AA07 | 27 |
| <i>Rhynchosporo albae-Sphagnetum tenelli</i> Martinič & Piskernik 1978 | 16AA08 | 28 |
| <i>Eriophoro vaginati-Sphagnetum papilloso</i> Martinič & Piskernik 1978 | 16AA09 | 39 |
| <i>Eriophoro vaginati-Sphagnetum magellanicum</i> Martinič & Piskernik 1985 nom. nud. | 16AA10 | 30 |
| <i>Calluno vulgaris-Sphagnetum fuscum</i> Martinič & Piskernik 1985 nom. nud. | 16AA11 | 30 |
| <i>Pino mugii-Sphagnetum fuscum</i> Martinič & Piskernik 1978 | 16AA12 | 30 |
| <i>Pino mugii-Sphagnetum russowii</i> Martinič & Piskernik 1978 | 16AA13 | 29 |
| <i>Pino mugii-Sphagnetum girgensohnii</i> Martinič & Piskernik 1978 | 16AA14 | 16 |
| <i>Pino mugii-Dicranetum polyseti</i> Martinič & Piskernik 1978 | 16AA15 | 8 |
| <i>Pino mugii-Vaccinietum uliginosum</i> Martinič & Piskernik 1978 | 16AA16 | 7 |
| <i>Sphagnetum cuspidatum</i> comm. | 16AA17 | 6 |
| (syn. <i>Sphagnetum cuspidatum</i> Martinič 1992 nom. nud.) | | |
| Oxyocco microcarpi-Empetrium hermaphroditum Nordhagen ex Du Rietz 1954 | 16AB | |
| Barja borealnega in delno arktičnega območja ter subalpskega pasu v zmernih predelih Evrope | | |
| Bogs of boreal and partly arctic regions and subalpine alpine belts in the temperate region of Eurasia | | |
| <i>Empetro hermaphroditum fuscum</i> Du Rietz. (1921) 1926 | 16AB01 | unpubl. (Martinič) |
| VEGETACIJA SKALNIH RAZPOK, MELIŠČ IN BALVANOV | | |
| Vegetation of rock crevices, screes and boulder-fields | | |
| Asplenietea trichomanis (Br.-Bl. in Meier & Br.-Bl. 1934) Oberd. 1977 | 17 | |
| Vegetacija razpok in skalnih klifov in zidov Evrope, Severne Amerike, Srednjega Vzhoda, Arktičnih otokov in Grenlandije | | |
| Vegetation of crevices and surface of rocky cliffs and walls of Europe, North Africa, Arctic islands and Greenland | | |
| Androsacetalia vandellii Br.-Bl. in Meier & Br.-Bl. 1934 nom. corr. | 17A | |
| Vegetacija silikatnih skal in razpok od zmernega do arktičnega pasu in na višjih nadmorskih višinah v Sredozemlju | | |
| Crevice vegetation of siliceous rocks of temperate to arctic zones and at high altitudes of the Mediterranean | | |
| Androsacetion vandellii Br.-Bl. in Br.-Bl. et Jenny 1926 nom. corr. | 17AA | |
| Nesktenjena vegetacija na silikatnih skalah v alpskem in nivalnem pasu v gorovjih srednje Evrope | | |

| | | |
|---|--------|------------------------------|
| Open vegetation of siliceous rocks in the alpine and nival belts of the Central European mountains | 17AA01 | 16 |
| <i>Campanulo-Primuletum villosae</i> Juvan et al. 2011 | 17B | |
| Potentilletalia caulescentis Br.-Bl. in Br.-Bl. et Jenny 1926 | | |
| Vegetacija apneniških skal in razpok na višjih nadmorskih višinah v območju mešanih in iglastih gozdov ter v arktičnem pasu gorovij Evrope | | |
| Vegetation of sunny calcareous rock faces and crevices at high altitudes of the nemoral, boreal and arctic mountains of Europe | | |
| Phyteumato-Saxifragion petraeae Mucina in Mucina et al. 2011 | 17BA | 3 |
| Vegetacija apneniških skal in razpok v subalpskem in alpskem pasu južnih Alp (v Sloveniji tudi montanski pas) | 17BA01 | 38 |
| Vegetation of calcareous rock faces and crevices of the subalpine and alpine belts of the Southern Alps | 17BA02 | 73 |
| <i>Potentilletum caulescentis</i> Aichinger 1933 | 17BA03 | 48 |
| <i>Potentillo clusianae-Campanuletum zoyssii</i> Aichinger 1933 | 17BA04 | 23 |
| <i>Potentilletum nitidae</i> Wikus 1959 | 17BA05 | 15 |
| <i>Paederoto-Minuartietum rupestris</i> T. Wraber 1986 | 17BA06 | 25 |
| <i>Saxifragetum squarroso-crustatae</i> Surina 2005 | 17BA07 | 12 |
| <i>Saxifragetum squarroso-crustatae</i> Surina 2005 | 17BA08 | 88 |
| <i>Primulo carniolicae-Potentilletum caulescentis</i> Dakskobler ex Dakskobler 2000 | 17BA09 | 15 |
| <i>Phyteumato columnae-Moehringietum villosae</i> Dakskobler 2000 | 17BA10 | 1 |
| <i>Campanulo carnicae-Moehringietum villosae</i> Dakskobler 2000 | 17BA11 | 15 |
| <i>Phyteumato-Potentilletum caulescentis</i> Poldini 1978 | 17BA12 | 10 |
| <i>Edrantho graminifoliae-Potentilletum caulescentis</i> Accetto 2008 | 17BA13 | 11 |
| <i>Seslerio calcariae-Saxifragetum paniculatae</i> Accetto 2004 | 17BA14 | 1 |
| <i>Seslerio kalnikensis-Arabidetum muralis</i> Accetto 2008 | 17BA15 | 28 |
| <i>Heliospermetum iskense</i> Accetto 2007 | 17BA16 | 1 |
| <i>Heliospermetum malyi</i> Accetto 2007 | 17BA17 | 15 |
| <i>Primuletum carniolicae</i> Accetto 2008 | 17BA18 | 9 |
| <i>Potentillo caulescentis-Ostryetum carpiniifoliae</i> Franz 2002 nom. nud. | 17BA19 | 1 |
| <i>Arabido alpinae-Saxifragetum petraeae</i> Accetto 2006 | 17BB | |
| <i>Jovibarbo hirtae-Saxifragetum crustatae</i> Accetto 2006 | | |
| <i>Seslerio kalnikensis-Arabidetum scopolianae</i> Accetto 1996 nom. inval. | | |
| Micromerion croaticae Horvat et al. 1974 | | |
| Vegetacija apnenčastih skal in razpok v subalpskem pasu v severozahodnih Dinaridih | | |
| Vegetation of calcareous rock faces and crevices of subalpine belt of the northwestern Dinarides | | |
| <i>Asplenietum fissi</i> Horvat 1931 | 17BB01 | unpubl. (Surina et al. 2004) |
| Violo biflorae-Cystopteridetalia alpinae Fernandez Casas 1970 | 17C | |
| Vegetacija senčnih apnenčastih skal in skalnih razpok na višjih nadmorskih višinah v gorovjih na območju mešanih in iglastih gozdov ter arktični regiji | | |
| Vegetation of shady calcareous rock faces and crevices at high altitudes of the nemoral, boreal and arctic mountains of Europe | 17CA | |
| Violo biflorae-Cystopteridion alpinae Fernandez Casas 1970 | | |
| (syn. <i>Cystopteridion fragilis</i> Richard 1972, <i>Ctenidio-Polypodium interjecti</i> Brullo et al. 2001) | | |
| Vegetacija zasenčenih apnenčastih skal in razpok v zmernem in borealnem pasu Evrope, arktičnih otokov in Grenlandije | | |
| Vegetation of shaded calcareous rock faces and crevices of temperate and boreal Europe, Arctic islands and Greenland | 17CA01 | 8 |
| <i>Valeriano elongatae-Asplenietum viridis</i> Wikus 1959 | 17CA02 | 11 |
| <i>Ranunculo traunfellneri-Paederotetum luteae</i> Surina 2005 | | |

| | | |
|--|--------|-----------------|
| <i>Neckero crispae-Campanuletum justinianae</i> Accetto 1995 | 17CA03 | 56 |
| <i>Neckero crispae-Polypodietum interjecti</i> Poldini & Tacchi 2009 | 17CA04 | 4 |
| <i>Trisetto argentei-Leontodontetum brumatii</i> Daksobler et al. 2012 | 17CA05 | 13 |
| <i>Moehringio-Pseudofumarietum albae</i> Horvat 1962 nom. nud. | 17CA06 | unpubl. (Čarni) |
| Onosmetalia frutescens Quézel 1964 | 17D | |
| Termo-mezosredozemska hazmofitska vegetacija apnenčastih klifov v Jadranski in Ionski obalni regiji | | |
| Thermo-mesomediterranean chasmophytic vegetation of limestone cliffs of the Adriatic and Ionian coastal regions | | |
| Centaureo-Campanulion Horvatić 1934 | 17DA | |
| Termofilna hazmofitska vegetacija apneniških skalnih razpok ob severnojadranski obali | | |
| Thermophilous chasmophytic vegetation of limestone crevices of the northern Adriatic coasts | | |
| <i>Asplenio lepidi-Moehringietum tommasinii</i> Martini 1990 | 17DA01 | 9 |
| <i>Campanulo-Centaureetum kartischianae</i> Lausi & Poldini 1962 | 17DA02 | 1 |
| Parietarietalia (Rivas-Mart. 1960) Rivas Goday 1964 | 17E | |
| Termofilna vegetacija zidov v južni in južnem delu srednje Evrope, Srednjega Vzhoda in severne Afrike | | |
| Thermophytic vegetation of walls in southern and south-central Europe, the Middle East and North Africa | | |
| Cymbalario-Asplenion quadrivalentis Segal 1969 | 17EA | |
| Vegetacija, bogata s praprotni, v razpokah osonečenih zidov v območjih tople in hladne klime Evrope | | |
| Fern-rich vegetation of crevices of sunny walls of regions of warm- and cool-temperate climate regions of Europe | | |
| <i>Asplenietium ruta-murariae-trichomanis</i> Kuhn 1937 | 17EA01 | 13 |
| <i>Cymbalarietum muralis</i> Görs 1966 | 17EA02 | 10 |
| <i>Corydalietum luteae</i> Kaiser 1926 | 17EA03 | unpubl. (Šilc) |
| Parietario judaicae-Centranthion rubri Rivas-Mart. 1960 | 17EB | |
| Zeliščna vegetacija zidov v (sub)mediteranski in atlantski regiji Evrope | | |
| Herbaceous vegetation of walls in (sub)mediterranean and atlantic regions of Europe | | |
| <i>Cymbalario muralis-Parietarietum judaicae</i> Pignatti 1952 | | |
| Asplenietalia septentrionalis Oberd. et al. 1967 | 17EB01 | unpubl. (Šilc) |
| Vegetacija skalnih razpok na silikatnih skalah v nižinah v zmernem in borealnem pasu Evrope | 17F | |
| Crevice vegetation of siliceous rocks at low altitudes of temperate and boreal Europe | | |
| Asplenion septentrionalis Gams ex Oberd. 1938 | 17FA | |
| Vegetacija silikatnih skalnih razpok, bogata s praprotnicami, v zmernem in borealnem pasu Evrope | | |
| Fern-rich vegetation of siliceous rock crevices of the temperate and boreal Europe | | |
| <i>Woodstio ilvensis-Asplenietium septentrionalis</i> Br.-Bl. ex R. Tx. 1937 | 17FA01 | 46 |
| Hypno-Polypodium vulgaris Mucina 1993 | 17FB | |
| Vegetacija silikatnih zasenečenih skalnatih razpok, bogata s praprotnicami, v kolinskem in submontanskem pasu srednje Evrope | | |
| Fern-rich vegetation of siliceous shaded rock crevices of the the colline to sub-montane belts of Central Europe | | |
| <i>Asplenio trichomanis-Polypodietum vulgaris</i> Firbas 1924 | 17FB01 | 44 |
| (syn. <i>Hypno-Polypodietum</i> Jurko & Pecar 1963) | | |
| Združba s pripadnostjo razredu | | |
| Other community of the class | | |
| <i>Asplenium seelosii</i> -[<i>Asplenietea trichomanis</i>] | 17XX01 | 4 |

Adiantetea Br.-Bl. 1948

Naskalne združbe, bogate s praprotni, na rastiščih, kjer škropi voda v Sredozemlju, na Atlantskih otokih, severni Afriki in Srednjem Vzhodu
 Fern-rich chasmophytic communities of water-splashed habitats of the Mediterranean, Atlantic islands, North Africa and Middle East

Adiantetalia capilli-veneris Br.-Bl. ex Horvatić 1934

Naskalne združbe, bogate s praprotni, na rastiščih, kjer škropi voda v Sredozemlju, na Atlantskih otokih, Severni Afriki in Srednjem Vzhodu
 Fern-rich chasmophytic communities of water-splashed habitats of the Mediterranean, Atlantic islands, North Africa and Middle East

Adiantion Br.-Bl. ex Horvatić 1934

Naskalne združbe, bogate s praprotni, na rastiščih, kjer škropi voda v Sredozemlju, na Atlantskih otokih, Severni Afriki in Srednjem Vzhodu
 Fern-rich chasmophytic communities of water-splashed habitats of the Mediterranean, North Africa and Middle East

Eucladietum verticillati Allorge ex Braun 1968

Phyllideto-Plagiochiletum cavernarum Tomažič 1946

Eucladio-Adiantetum Br.-Bl. 1931

18

18A

18AA

18AA01

18AA02

18AA03 unpubl. (Dakskobler)

Thlaspietea rotundifoliae Br.-Bl. 1948

Vegetacija melišč in prodišč v zmernem, borealnem in oromediteranskem pasu Evrope in Arktičnih otokov

Vegetation of scree habitats and pebble alluvia of the temperate, boreal and and oromediteranean Europe and of the Arctic islands

Thlaspietalia rotundifolii Br.-Bl. in Br.-Bl. & Jenny 1926

Alpinske in subalpinske meliščne združbe na apnencu

Alpine and sub-alpine calcareous scree communities

Thlaspion rotundifolii Jenny-Lips 1930

Vegetacija apnenčastih melišč subalpinskega in alpinskega pasu v Alpah

Vegetation of calcareous screes of subalpine and alpine belts of the Alps

Papaveri kerneri-Thlaspietum kerneri T. Wraber 1970

Leontodontetum montani Jenny-Lips 1930

Saxifragetum hohenwartii Aichinger 1933

Doronicetum grandiflorae Jenny-Lips 1930

Papaveri julici-Thlaspietum rotundifolii T. Wraber 1970

Campanulo cespitosae-Globularietum cordifoliae Accetto 2006

Arabido alpinae-Petasitetalia paradoxo Mucina et al. 2012

Vegetacija vlažnih apnenčastih melišč in balvanskih polj v montanskem in subalpinskem pasu v območju mešanih gozdov v gorstvih Evrope

Vegetation of calcareous humid screes and boulder fields of the montane to subalpine belts of the nemoral mountain ranges of Europe

Petasition paradoxo Zollitsch ex Lippert 1966

Vegetacija vlažnih apnenčastih sotesk in montanskih melišč v montanskem in subalpinskem pasu Alp

Vegetation of humid calcareous fine-grained screes of the montane and subalpine belts of the Alps

Petasiteum nivei Beger 1922

19BA01

19BA02

19BA03

19BA04

19BA05

19

19AA

19AA01

19AA02

19AA03

19AA04

19AA05

19AA06

19B

19BA01

19BA02

19BA03

19BA04

19BA05

| | | |
|--|--------|---------------------------|
| <i>Astrantio carniolicae-Adenostyletum glabrae</i> Dakskobler 2008 | 19BA06 | 21 |
| <i>Athamantho cretensis-Trisetetum argentei</i> Poldini & Martini 1993 | 19BA07 | unpubl. (Dakskobler 2005) |
| Arabidietalia caeruleae Rübél ex Br.-Bl. 1948 | 19C | |
| Vegetacija snežnih dolinica na ustaljenih apnenčastih meliščih v alpinsko-subnivalnem pasu v gorovjih Evrope | | |
| Vegetation of snow-beds on stabilised calcareous screes of alpine-subnival belts of European mountains | | |
| Arabidition caeruleae Br.-Bl. in Br.-Bl. & Jenny 1926 | 19CA | |
| Vegetacija snežnih dolinic na stabilnih apnenčastih meliščih v srednji in južni Evropi | | |
| Vegetation of snow-beds on stabilised calcareous screes of alpine-subnival belts of European mountains | | |
| <i>Homogyno discoloris-Salicetum retusae</i> Aichinger 1933 | 19CA01 | 27 |
| <i>Potentillo dubiae-Homogynetum discoloris</i> Aichinger 1933 | 19CA02 | 11 |
| <i>Saxifragetum stellaro-sedoidis</i> Englisch 1999 | 19CA03 | 6 |
| <i>Salici retusae-Geranietum argentei</i> Surina 2005 | 19CA04 | 22 |
| <i>Saxifrago sedoidis-Arabidietum caeruleae</i> T. Wraber 1972 nom. ined. | 19CA05 | 13 |
| <i>Festuco violaceae-Rumicetum nivalis</i> T. Wraber 1972 nom. ined. | 19CA06 | 15 |
| <i>Drepanocladum uncinati-Heliospermetum pusillae</i> Surina & Vreš 2004 | 19CA07 | 33 |
| <i>Salix alpina</i> comm. | 19CA08 | 3 |
| | 19D | |
| Epilobietalia fleischeri Moor 1958 | | |
| Vegetacija montansko-subalpinskih rečnih prodnatih teras v območju mešanih in iglastih gozdov v gorstvih Evrope in Kavkaza | | |
| Vegetation of montane-subalpine riverine gravel terraces of the nemoral-boreal European mountain ranges and Caucasus | | |
| Salicion incanae Aichinger 1933 | 19DA | |
| Vegetacija montansko-subalpinskih rečnih prodnatih teras v Alpah in Karpatih | | |
| Vegetation of montane-subalpine riverine gravel terraces of the Alps and the Carpathians | | |
| <i>Leontodonti berinii-Chondriletum</i> T. Wraber 1955 | 19DA01 | 5 |
| <i>Epilobio-Scrophularietum caninae</i> W. Koch & Br.-Bl. ex T. Müller 1974 | 19DA02 | 13 |
| | 19E | |
| Galio-Parietariale officinalis Boşcaiu et al. 1966 | | |
| Toplojubne združbe apnenčastih melišč od kolinskega do montanskega pasu srednje in jugovzhodne Evrope | | |
| Thermophilous calcareous scree communities of colline to montane belts of Central and south-east Europe | | |
| Stipion calamagrostis Jenny-Lips ex Br.-Bl. 1948 | 19EA | |
| Toplojubne združbe apnenčastih melišč srednje in zahodne Evrope | | |
| Vegetation of thermophilous communities of calcareous screes of Central and Western Europe | | |
| <i>Rumicetum scutati</i> Kuhn 1937 | 19EA01 | 2 |
| <i>Vincetoxicetum hirsundinariae</i> Kaiser 1926 | 19EA02 | 1 |
| <i>Arabido turritiae-Auriniyetum petraeae</i> Dakskobler 2007 | 19EA03 | 21 |
| <i>Stipetum calamagrostis</i> Br.-Bl. 1918 | 19EA04 | unpubl. (Dakskobler 2005) |
| <i>Galopsietum angustifoliae</i> (Büker 1942) Bornkamm 1960 | 19EA05 | unpubl. (Šilc) |
| <i>Silene glareosa</i> comm. | 19EA06 | 5 |
| | 19G | |
| Violetalia calaminiariae Br.-Bl. & R. Tx. ex Ernst 1965 | 19GA | |
| Na težke kovine prilagojene trate na rudarski jalovini v Evropi | | |
| Swards of heavy-metal tolerant vegetation on mining spoil heaps of Europe | | |
| Thlaspion calaminiariae Ernst 1965 | | |

| | | | |
|---|--------|------|----------------------|
| Na težke kovine odporne trate na rudarski jalovini v severozahodni Evropi (in tudi v Sloveniji) | | | |
| Swards of heavy-metal tolerant vegetation on mining spoil heaps of north-western Europe | | | |
| <i>Thlaspietum cepaeifolii</i> Ernst 1964 | 19GA01 | 4 | |
| Združba s pripadnostjo razredu | | | |
| Other community of the class | | | |
| <i>Petasites paradoxus</i> -[<i>Thlaspieteta rotundifolii</i>] | 19XX01 | 23 | |
| <i>Drypetea spinosae</i> Quézel 1964 | 20 | | |
| Termofilna vegetacija na meliščih in prodiščih v srednjem in vzhodnem Sredozemlju | | | |
| Vegetation of thermophilous sree habitats and pebble alluvia of the Central and Eastern Mediterranean | | | |
| <i>Arabidetalia flavescens</i> Lakušić 1968 | 20A | | |
| Vegetacija termofilnih melišč in prodišč v srednjem in vzhodnem Sredozemlju | | | |
| Vegetation of thermophilous sree habitats and pebble alluvia of the Central and Eastern Mediterranean | | | |
| <i>Peltarion alliaceae</i> Horvatić 1958 | 20AA | | |
| Meliščna vegetacija na apnencu v submontanskem in montanskem pasu na srednjem Balkanu | | | |
| Limestone sree vegetation of the submontane to montane belts of the central Balkans | | | |
| <i>Festuco carniolicae</i> - <i>Drypidetum jacquinianae</i> Poldini 1978 | 20AA01 | 20 | |
| <i>Allio globosi</i> - <i>Iberidetum intermediae</i> Poldini 1980 | 20AA02 | 1 | |
| <i>Loiseleurio-Vaccinietea</i> Egler ex Schubert 1960 | 21 | | |
| Arktično-borealna grmišča tundre in (sub)alpinska pritikava grmišča Evrazije in Severne Amerike | | | |
| Arctic-boreal tundra scrub and (sub)alpine dwarf scrub of Eurasia and North America | | | |
| <i>Rhododendro-Vaccinietalia</i> Br.-Bl. in Br.-Bl. & Jenny 1926 | 21A | | |
| Arktično-borealna grmišča tundre in (sub)alpinske pritikave grmičaste resave Evrazije in Severne Amerike | | | |
| Arctic-boreal tundra scrub and (sub)alpine acidophilous dwarf heath of Eurasia and North America | | | |
| <i>Loiseleurio-Vaccinion</i> Br.-Bl. in Br.-Bl. et Jenny 1926 | 21AA | | |
| Erikoidna pritikava grmišča na vetrovnih rastiščih na silikatih v subalpskem in alpskem pasu gorovij srednje Evrope (v Sloveniji tudi na karbonatu) | | | |
| Ericoid dwarf scrub of wind-exposed habitats on siliceous substrates of subalpine and alpine belts of the Central European mountains | | | |
| <i>Empetro-Vaccinietum gaultherioidis</i> Br.-Bl. in Br.-Bl. & Jenny 1926 corr. Grabherr 1993 | 21AA01 | 3 | |
| <i>Juncetea trifidi</i> Hadač in Klika & Hadač 1944 | 22 | 22 1 | |
| Alpski kisloljubni travniki Srednje Evrope in Balkana in arktične in boreo-arktične trate eline | | | |
| Alpine acidophilous grasslands of Central European and Balkan mountains and Arctic and boreo-arctic rush swards | | | |
| <i>Festucetalia spadiceae</i> Barbero 1970 | 22A | | |
| Alpski kisloljubni vrstno bogati travniki v Alpah, Karpatih in Apeninih | | | |
| Alpine acidophilous species-rich grasslands of the Alps, Carpathians, Apennines | | | |
| <i>Nardion strictae</i> Br.-Bl. 1926 | 22AA | | |
| Travnate ruše z volkom, kjer dolgo obleži sneg, v subalpskem in alpskem pasu Alp, Karpatov in severnih Apeninov | | | |
| Matt-grass chionophilous swards of the subalpine and alpine belts of the Alps, Carpathians and Northern Apennines | | | |
| <i>Sieversio-Nardetum strictae</i> Lüdi 1948 | 22AA01 | | unpubl. (Datskobler) |

VEGETACIJA ARKTIČNE, BOREALNE IN ALPINSKE CONE

Vegetation of arctic, boreal and alpine zones

VEGETACIJA MONTANSKIH ZELIŠČ, TRAVIŠČ, GOLIČAV (POSEK) IN SNEŽNIH DOLINIC

Vegetation of montane herblands, grassland, fell-fields and snow-beds

Mulgedio-Aconitetea Hadač & Klika in Klika & Hadač 1944

Grmišča in visoka stebljkovja na rastiščih, ki jih vlaži in gnoji mezeča voda, na visokih nadmorskih višinah v celinskem delu Evrope in na Grenlandiji
Scrub and tall-herb vegetation in habitats moistened and fertilised by percolating water at high altitudes of continental Europe and in Greenland

23

Calamagrostietalia villosae Pawłowski et al. 1928

Visoka stebljkovja in združbe bogate s praprotnicami na kislil do izpranih karbonatnih tleh v Alpah, Karpatih in Hercinskem hribovju
Tall-herb and fern-rich communities on acidic to leached carbonate soils of the Alps, Carpathians and Hercynian mountains

23A

Calamagrostion arundinaceae (Luquet 1926) Oberdorfer 1957

Travišča vrstno bogata s stebljkami na suhih kislilnih tleh v zgornjem montanskem in subalpskem pasu zahodne in srednje Evrope
(v Sloveniji tudi na bolj nevtralnih tleh)

23AA

Tall herb species-rich grasslands on dry acidic soils of the upper montane and subalpine belts of Western and Central Europe

23AA01 10

Festuco calvae-Stemmacanthetum rhaponticae Dakskobler 2008

Trollio europeae-Aconitetum ranunculifolii Dakskobler 2008

Laserpitio sileri-Grafitetum golaekae Poldini in Dakskobler & Poldini 2012

23AA02 10

23AA03 unpubl. (Dakskobler)

23B

Adenostyletalia alliariae Br.-Bl. 1930

Visoka stebljkovja in grmišča na rodovitnih tleh na visokih nadmorskih višinah v zmernem in sredozemskem delu Evrope

Tall-herb and scrub communities on fertile soils at high altitudes of temperate and mediterranean Europe

23BA

Adenostylien alliariae Br.-Bl. 1926

Visoka stebljkovja na silikatnih substratih gorovij v območju mešanih gozdov v Evropi (v Sloveniji tudi na karbonatu)

Tall-herb communities on siliceous substrates of mountains of nemoral zone of Europe

23BA01 5

23BA02 33

23BA03 5

23BA04 13

23BA05 27

23BC

Delphinion elati Hadač ex Hadač et al. 1969

Submontanska do subalpska visoka stebljkovja na apnencu v Karpatih in Alpah

Sub-montane to subalpine calcicolous tall-herb communities of the Carpathians and Alps

Aegopodio-Anthriscetum nitidi Kopecký 1974 nom. invers. propos.

Geranio phaei-Urticetum dioicae Hadač 1968

23BC01 unpubl. (Čarni)

23BC02 unpubl. (Čarni)

23C

Senecionis rupestris-Rumicetalia alpini Mucina in Mucina et al. 2011

Subalpske nitrofilne ruderalne združbe Evrope in Kavkaza

Subalpine nitrophilous ruderal communities of Europe and the Caucasus

| | | |
|--|--------|---------------------------|
| Rumicion alpini Rübél ex Scharfetter 1938 | 23CA | |
| Subalpinske nitrofilne ruderalne združbe Evrope | | |
| Subalpine nitrophilous ruderal communities of Europe | | |
| <i>Rumicetum alpini</i> Beger 1922 | 23CA01 | 10 |
| <i>Trollio europaei-Deschampsietum cespitosae</i> Horvat ex T. Wraber 2007 | 23CA02 | 8 |
| Petasio-Chaerophylletalia Morarii 1967 | 23D | |
| Nitrofilna vegetacija visokih steblikovij ob gorskih potokih v srednji Evropi, na Balkanu in Apeninih | | |
| Nitrophilous tall-herb vegetation of mountain streamsides of Central Europe, Balkans and the Apennines | | |
| Petasion officinalis Sillinger 1933 | 23DA | |
| Visoka steblikovja na surovih nanešenih tleh ob gorskih potokih na Karpatih in v Hercinskem gorovju | | |
| Tall-herb vegetation of raw alluvium soils on montane stream banks of the Carpathians and Hercynicum | | |
| <i>Chaerophylo-Petasitetum officinalis</i> Kaiser 1926 | 23DA01 | 21 |
| <i>Scopolio carniolicae-Petasitetum albi</i> Dakskobler 2008 nom. inval. | 23DA02 | 4 |
| <i>Arunco-Petasitetum albi</i> Br.-Bl. & Sutter 1977 | 23DA03 | unpubl. (Dakskobler 2005) |
| Salicetea herbaceae Br.-Bl. 1948 | 24 | |
| Arktična in alpinsko-subnivalna vegetacija snežnih dolinic in pobočij v Evraziji in Grenlandiji, kjer dolgo obleži sneg in so tla namočena s talečim se snegom | | |
| Arctic and alpine-subnival vegetation of long-lasting snow-beds and slopes irrigated by melt waters of mountains of Eurasia and Greenland | | |
| Salicetalia herbaceae Br.-Bl. in Br.-Bl. et Jenny 1926 | 24A | |
| Arktična in alpinsko-subnivalna vegetacija snežnih dolinic in pobočij v Evraziji in Grenlandiji, kjer dolgo obleži sneg in so tla namočena s talečim se snegom | | |
| Arctic and alpine-subnival vegetation of long-lasting snow-beds and slopes irrigated by melt waters of mountains of Eurasia and Greenland | | |
| Salicion herbaceae Br.-Bl. in Br.-Bl. et Jenny 1926 | 24AA | |
| Združbe snežnih dolinic na silikatnih substratih v alpskem in nivalnem pasu gorovij v območju mešanih gozdov Evrope | | |
| Snow-bed communities on siliceous substrates of alpine and nival belts of mountains of nemoral zone of Europe | | |
| <i>Salicetum herbaceae</i> Rübél 1911 | 24AA01 | 1 |
| Elyno-Seslerietea Br.-Bl. 1948 | 25 | 8 |
| Alpinske in subalpinske trate na apnencu v gorovjih na območju mešanih gozdov | | |
| Alpine and subalpine calcareous swards of nemoral mountain ranges | | |
| Seslerietalia coeruleae Br.-Bl. in Br.-Bl. et Jenny 1926 | 25A | |
| Alpinska in subalpinska travišča na apnencu na območjih mešanih gozdov v gorovjih Evrope | | |
| Alpine and sub-alpine calcareous grasslands of the European nemoral mountain ranges | | |
| Caricion firmae Gams 1936 | 25AA | |
| Trate šašev na vetrovnih rastiščih v alpskem pasu Alp in Karpatov | | |
| Wind-exposed calcareous sedge swards in the alpine belt of the Alps and Carpathians | | |
| <i>Gentiano terglouensis-Caricetum firmae</i> T. Wraber 1970 | 25AA01 | 46 |
| <i>Caricetum mucronatae</i> (Br.-Bl. in Br.-Bl. & Jenny 1926) Thomaser 1977 | 25AA02 | 26 |
| <i>Dryadetum octopetalae</i> Rübél 1911 | 25AA03 | 6 |
| <i>Primulo carniolicae-Caricetum firmae</i> Dakskobler 2006 | 25AA04 | 22 |

| | | |
|---|--------|------------------|
| Seslerion albicantis Br.-Bl. in Br.-Bl. et Jenny 1926 corr. Oberd. 1983 | 25AB | |
| Zgornje montanske do subalpinske subkserofilne trate vilovine v Alpah | | |
| Supramontane to alpine calcareous sub-xerophilous blue-grass swards of the Alps | | |
| <i>Koelerio-Festucetum amethystinae</i> Horvat ex Horvat et al. 1974 | 25AB01 | 5 |
| Caricion austroalpinae Sutter 1962 | 25AC | |
| Zgornje montanska do alpinska subkserofilna travišča na apnencu v južnem obrobju vzhodnih Alp | | |
| Supramontane to alpine calcareous sub-xerophilous grasslands of the southern margins of the Eastern Alps | | |
| <i>Ranunculo hybridi-Caricetum sempervirentis</i> Poldini & Feoli Chiapella in Feoli Chiapella & Poldini 1993 | 25AC01 | 25 |
| <i>Avenastro parlatorei-Festucetum calvae</i> (Aichinger 1933 corr. Franz 1980) Poldini & Feoli Chiapella in Feoli Chiapella & Poldini 1993 | 25AC02 | 16 |
| <i>Centaureo julici-Laserpitietum sileris</i> Dakskobler in Dakskobler & Poldini 2012 | 25AC03 | 56 |
| <i>Primulo carniolicae-Seslerietum calcariae</i> Dakskobler 2006 | 25AC04 | 17 |
| (syn. <i>Primulo carniolicae-Seslerietum albicantis</i> Dakskobler 2003 nom. prov.) | | |
| <i>Primulo carniolicae-Caricetum sempervirentis</i> Accetto 2010 | 25AC05 | 1 |
| <i>Carici sempervirentis-Seslerietum kalmikensis</i> Accetto 1995 | 25AC06 | 1 |
| <i>Carici sempervirentis-Astrantietum majoris</i> Accetto 1999 nom. prov. | 25AC07 | 1 |
| Caricion ferrugineae Br.-Bl. 1931 | 25AD | |
| Zgornje montanska do alpinska mezohigrofilna travišča šašev na apnencu v Alpah in Karpatih | | |
| Supramontane to alpine calcareous meso-hygrophilous sedge swards of the Alps and Carpathians | | |
| <i>Caricetum ferrugineae</i> Lüdi 1921 | 25AD01 | 30 |
| <i>Hyperico alpini-Caricetum ferrugineae</i> Horvat ex T. Wraber 1971 | 25AD02 | 9 |
| <i>Saxifrago aizoidis-Caricetum ferrugineae</i> Dakskobler 1996 | 25AD03 | 9 |
| <i>Carici ferrugineae-Eryngietum alpinae</i> Seljak ex Dakskobler et al. 2005 | 25AD04 | 24 |
| Seslerietalia tenuifoliae Horvat 1930 | 25B | |
| Alpinska in subalpinska travišča s šopasto rušo na apnencu na severnem Balkanu in Apeninih | | |
| Alpine and subalpine calcareous tussock grasslands of the northern Balkan Peninsula and the Apennines | | |
| Seslerion tenuifoliae Horvat 1930 | 25BA | |
| Subalpinska in alpinska šopasta travišča tankolistne vilovine v ilirsko-dinarski regiji | | |
| Subalpine and alpine calcareous tussock blue-grass grasslands of the Illyrian-Dinaric regions | | |
| <i>Scabioso silenifoliae-Caricetum mucronatae</i> Surina & T. Wraber 2005 | 25BA01 | 20 |
| <i>Scabioso silenifoliae-Dryadetum octopetalae</i> Surina 2005 | 25BA02 | 6 |
| <i>Edraiantho graminifolii-Caricetum firmiae</i> Horvat (1930) 1934 | 25BA03 | 1 |
| <i>Carici laevetis-Helianthemum alpestris</i> Horvat 1930 | 25BA04 | unpubl. (Surina) |
| <i>Scabiosa silenifolia</i> comm. | 25BA05 | 3 |
| Festucion pungentis Horvat 1930 | 25BB | |
| Subalpinska travišča s šopasto rušo na apnencu na strmih terasastih pobočjih v severnih Dinaridih | | |
| Subalpine calcareous tussock grasslands on steep terraced slopes of the North Dinarides | | |
| <i>Festucetum pungentis</i> Horvat 1930 | 25BB01 | 3 |

ANTROPOGENA VEGETACIJA

Anthropogenic vegetation

- Bidentetea R. Tx. et al. ex von Rochow 1951** 26
 Poletna enoletna pionirska vegetacija na periodično poplavljenih bregovih vodnih teles
 Summer-annual, pioneer vegetation of periodically flooded edges of water bodies
- Bidentetalia Br.-Bl. et Tx. ex Klika & Hadač 1944** 26A
 Poletna enoletna pionirska vegetacija na periodično poplavljenih bregovih vodnih teles
 Summer-annual, nitrophytic pioneer vegetation of periodically flooded edges of water bodies
- Bidention tripartitae Nordhagen ex Klika et Hadač 1944** 26AA
 Poletna enoletna pionirska vegetacija na periodično poplavljenih bregovih potokov; mlak in ribnikov
 Summer-annual, nitrophytic pioneer vegetation of periodically flooded edges of streams and ponds
- Polygono lapathifolii-Bidentetum tripartitae* Klika 1935 26AA01 10
Bidenti-Polygonetum hydropiperis Lohm. in R. Tx. 1950 nom. invers. propos. 26AA02 57
Rumicetum maritimi Sissingh ex R. Tx. 1950 26AA03 3
Rumici-Cyperetum glomerati Seliškar 1998 nom. nud. 26AA04 5
Calystegio-Salicetum purpureae Petkovšek 1966 26AA05 10
 26AB
- Chenopodion rubri (Tx. in Poli et J. Tx. 1960) Hilbig et Jäger 1972**
 Poletna enoletna pionirska vegetacija na s hranili zelo bogatih in slanih ruderalnih rastiščih
 Summer-annual, pioneer vegetation of heavily nutrient-loaded and saline ruderal habitats
- Chenopodietum ficifolii* Hejny in Hejny et al. 1979 26AB01 3
Chenopodietum rubri Timár 1947 26AB02 unpubl. (Šilc)
- Polygono-Poetea annuae Rivas-Mart. 1975** 27
 Subkozmodolitska vegetacija pritikavih zelišč na pohojenih rastiščih, bogata s terofiti
 Subcosmopolitan therophyte-rich dwarf-herb vegetation of trampled habitats
- Polygono arenastri-Poetalia annuae R. Tx. in Géhu et al. 1972 corr. Rivas-Mart. et al. 1991** 27A
 Subkozmodolitska vegetacija pritikavih zelišč na pohojenih rastiščih, bogata s terofiti
 Subcosmopolitan therophyte-rich dwarf-herb vegetation of trampled habitats
- Polygono-Coronopion Sissingh 1969** 27AA
 Z zelišči bogata vegetacija na pohojenih rastiščih v zmernem in borealnem pasu Evrope
 Herb-rich vegetation of trampled habitats of the temperate to boreal zones of Europe
- Matricario-Polygonetum arenastri* T. Müller in Oberd. 1971
Poetea annuae Felföldy 1942
Poo-Coronopetum squamati (Oberd. 1957) Gutte 1966
Coronopoda procumbentis-Sclerochloëtum durae Br.-Bl. ex Br.-Bl. et al. 1936
Chamaesyce supinae-Polygonetum arenastri (Timár 1950) Ubrisy 1974 corr. Borhidi 1996
Polygonetum calcati Lohm. 1975 unpubl. (Šilc)
 unpubl. (Šilc)

| | | |
|---|--------|-----|
| <i>Saginion procumbentis</i> R. Tx. et Ohba in Géhu et al. 1972 | 27AB | |
| Z zelišči bogata vegetacija močno pohojenih vlažnih in zasenčenih rastišč v Evropi | | |
| Herb-rich vegetation of strongly trampled moist and shaded habitats of Europe | | |
| <i>Sagino procumbentis-Bryetum argentei</i> Diemont et al. 1940 | 27AB01 | 2 |
| <i>Hernarietum glabrae</i> (Hohenester 1960) Jehlík & Hejný 1975 | 27AB02 | 1 |
| | | |
| <i>Stellarietea mediae</i> R. Tx. et al. ex von Rochow 1951 | 28 | |
| Enoletne plevelne združbe obdelanih njiv, vrtov in smetišč | | |
| Annual weed communities of arable crops, gardens and waste places | | |
| <i>Centaureetalia cyani</i> R. Tx. et al. ex von Rochow 1951 | 28A | |
| Plevelne združbe obdelanih tal na s karbonati bogatih tleh v zmernem pasu, stepski in subborealni coni Evrope | | |
| Weed communities of arable crops on lime-rich soils in temperate, steppe and sub-boreal zones of Europe | | |
| <i>Caucalidion lappulae</i> von Rochow 1951 | 28AA | |
| Plevelne združbe žit na z bazami bogatih tleh srednje Evrope | | |
| Weed communities of cereal crops on base-rich soils in Central Europe | | |
| <i>Kickxietum spuriae</i> Kruseman & Vlieger 1939 | 28AA01 | 3 |
| <i>Galio tricornuti-Ranunculetum arvensis</i> Kaligarič 2001 | 28AA02 | 42 |
| <i>Veronico-Euphorbion Sissingh ex Passarge 1964</i> | 28AB | |
| Plevelna vegetacija vinogradov in vrtov na z bazami bogatih tleh v srednji in zahodni Evropi | | |
| Weed vegetation of vineyards and gardens on base-rich soils of Central and Western Europe | | |
| <i>Geranio rotundifolii-Allietum</i> R. Tx. ex von Rochow 1951 | 28AB01 | 21 |
| <i>Veronicetum trilobae-triphyllidi</i> Slavnić 1951 | 28AB02 | 92 |
| <i>Mercurialietum annuae</i> Kruseman & Vlieger 1939 | 28AB03 | 26 |
| <i>Atriplici-Chenopodietalia albi</i> (R. Tx. 1937) Nordhagen 1950 | 28B | 70 |
| Plevelne združbe žit in drugih kulturnih rastlin ter vrtov na kisljih in s hranili siromašnih tleh | | |
| Weed communities of cereal and other cultures and gardens on acidic and nutrient-poor soils | | |
| <i>Scleranthion annui</i> (Kruseman et Vlieger 1939) Sissingh in Westhoff et al. 1946 | 28BA | |
| Plevelne združbe ozimnih žit na nevtralnih do kisljih glinastih in peščeno-glinastih tleh v zmernem pasu Evrope | | |
| Weed communities of winter cereal cultures on neutral to acid loamy and sandy-loamy soils in temperate Europe | | |
| <i>Trifolietum campestri-arvensis</i> Kutschera 1966 | 28BA01 | 3 |
| <i>Aethuso-Galeopsietum</i> G. Müller 1964 | 28BA02 | 1 |
| <i>Alchemillo-Matricarietum</i> R. Tx. 1937 | 28BA03 | 138 |
| <i>Aphanes arvensis</i> comm. | 28BA04 | 38 |
| <i>Oxalidion europeae</i> Passarge 1978 | 28BB | |
| Evropske plevelne združbe obdelanih njiv na vlažnih glinastih tleh | | |
| European weed communities of arable lands on moist loamy soils | | |
| <i>Panico-Chenopodietum polyspermi</i> R. Tx. 1937 | 28BB01 | 158 |
| <i>Hyoscyamo-Chenopodietum hybridi</i> Mucina in Mucina et al. 1993 | 28BB02 | 4 |
| <i>Galeopsido tertahit-Galinsogietum parviflorae</i> Poldini et al. 1998 | 28BB03 | 21 |

| | |
|---|-----------------------|
| <i>Spergulo arvensis-Erodion cicutariae</i> J. Tx. in Passarge 1964 | 28BC |
| Plevelne združbe okopavin in poletnih žit bogate s travami v zmernem pasu Evrope | |
| Weed communities of root crops and summer cereals dominated by graminoids in temperate Europe | |
| <i>Echinochloa-Setariaetum pumilae</i> Felföldy 1942 corr. Mucina 1993 | 28BC01 115 |
| <i>Sorghum halepense</i> comm. | 28BC02 1 |
| <i>Eragrostietalia</i> J. Tx. ex Poli 1966 | 28C |
| Toplojubna antropogena vegetacija, bogata s travami in C4 vrstami, na poletnih suhih rastiščih južne in jugovzhodne Evrope | 28CA |
| Thermophilous grass-rich anthropogenous vegetation rich in C4 species of summer-dry habitats of southern and south-eastern Europe | |
| <i>Salsolion ruthenicae</i> Philippi 1971 | |
| Ruderalna vegetacija motenih prodnatih in peščenih tal v subkontinentalnih delih srednje Evrope | |
| Ruderal vegetation of disturbed gravelly and sandy soils of subcontinental regions of Central Europe | |
| <i>Panicetum capillaris</i> Mititelu & Roman 1988 | 28C0A1 3 |
| <i>Eragrostio-Polygonion arenastri Couderc et Izco ex Čarni et Mucina 1998</i> | 28CB |
| Poletne suhe pohojene združbe na suhih peščenih tleh zahodne in srednje Evrope | |
| Summer-dry trampled plant communities on dry sandy soils of Western and Central Europe | |
| <i>Eragrostio-Polygonetum arenastri</i> Oberd. 1954 corr. Mucina 1993 | 28CB01 12 |
| <i>Chamaesyco humifusae-Oxalidetum corniculatae</i> Forstner in Mucina 1993 | 28CB02 3 |
| <i>Portulaco-Euphorbietum maculatae</i> (Brandes 1993) Čarni & Mucina 1998 | 28CB03 8 |
| <i>Sonchus-Amaranthus deflexus</i> comm. | 28CB04 3 |
| <i>Eragrostion</i> Tx. ex Oberd. 1954 | 28CC |
| Toplojubna plevelna vegetacija na peščenih tleh vzhodne in jugovzhodne Evrope | |
| Thermophilous weed vegetation on sandy soils of Eastern and south-eastern Europe | |
| <i>Portulacetum oleracei</i> Felföldy 1942 | 28CC01 1 |
| <i>Polycarpo-Eleusinon indicae</i> Čarni & Mucina 1998 | 28CD |
| Toplojubna vegetacija na pohojenih rastiščih severne Italije in Ilirske regije | |
| Thermophilous vegetation of trampled habitats of northern Italy and the Illyrian region | |
| <i>Polycarpo tetraphylli-Amaranthetum deflexi</i> Pignatti 1953 | 28CD01 7 |
| <i>Eleusinatum indicae</i> Pignatti 1953 | 28CD02 2 |
| <i>Euphorbio-Oxalidetum corniculatae</i> Lorenzoni 1964 | 28CD03 1 |
| Združbe na nivoju reda | |
| Other communities of the order | |
| <i>Cynodon dactylon</i> -[<i>Eragrostietalia</i>] | 28CX01 8 |
| <i>Digitaria sanguinalis</i> -[<i>Eragrostietalia</i>] | 28CX02 unpubl. (Šilc) |
| <i>Carex hirta</i> -[<i>Eragrostietalia</i>] | 28CX03 unpubl. (Šilc) |
| <i>Sisymbrietalia</i> J. Tx. ex Görs 1966 | 28D |
| Plevelna vegetacija obdelanih njiv, vrtov in smetišč v območju mešanih gozdov in step Evrope | |
| Weed vegetation of arable crops, gardens and waste places of nemoral and steppe zones of Europe | |
| <i>Sisymbriion officinalis</i> R. Tx. et al. ex von Rochow 1951 | 28DA |
| Eoletna ruderalna vegetacija, bogata s travami, na s hranili bogatih rastiščih v območjih zmernega pasu z milimi zimami vzhodne in srednje Evrope | |
| Grass-rich annual ruderal vegetation of nutrient-rich habitats of temperate winter-mild Western and Central Europe | |

| | | |
|---|--------|----------------|
| <i>Conyzo canadensis-Lactucetum serriolae</i> Lohm. in Oberd. 1957 | 28DA01 | 9 |
| <i>Hordeetum murini</i> Libbert 1933 | 28DA02 | 29 |
| <i>Linario-Brometum tectorum</i> Knapp 1961 | 28DA03 | 1 |
| <i>Polygono arenastri-Lepidietum ruderales</i> Mucina et al. 1993 | 28DA04 | 3 |
| <i>Hordeo murini-Brometum sterilis</i> Lohm. ex von Rochow 1951 (syn. <i>Brometum sterilis</i> Görs 1966) | 28DA05 | 1 |
| <i>Parietaria judaica</i> comm. (sensu Poldini 1994) | 28DA06 | 1 |
| <i>Sisymbrium officinale</i> comm. | 28DA07 | unpubl. (Šilc) |
| Malvion neglectae (Gutte 1972) Hejny 1978 | 28DB | |
| Nitrofilna ruderalna vegetacija nizkoraslih zelišč na zmerno pohojenih rastiščih v zmernem pasu zahodne in srednje Evrope | | |
| Nitrophilous ruderal vegetation of low-grown herbs in slightly trampled habitats of temperate Western and Central Europe | | |
| <i>Hyoiscamo nigri-Malvetum neglectae</i> Aichinger 1933 | 28DB01 | 59 |
| <i>Malvetum pusillae</i> Morariu 1943 | 28DB02 | 5 |
| <i>Malvio neglectae-Chenopodietum vulvariae</i> Gutte 1972 | 28DB03 | 1 |
| <i>Matricarietum discoideae-recutitae</i> Jarolimek et al. 1997 | 28DB04 | 2 |
| Združba na nivoju reda | | |
| Other community of the order | | |
| <i>Tripleurospermum inodorum</i> -[<i>Sisymbrietalia</i>] | 28DX01 | 1 |
| Chenopodietalia muralis Br.-Bl. in Br.-Bl. et al. 1936 | 28E | |
| Ruderalna vegetacija bogata z zelišči na motenih, s hranili bogatih rastiščih v Sredozemlju in Makaroneziji | | |
| Ruderal herb-rich vegetation on high-nutrient disturbed soils of the Mediterranean and the Macaronesia | | |
| Chenopion muralis Br.-Bl. in Br.-Bl. et al. 1936 | 28EA | |
| Sredozemska nitrofilna ruderalna vegetacija, v kateri prevladujejo nizkorasla nesukulentna zelišča | | |
| Mediterranean nutrient-loving ruderal vegetation dominated by low-grown non-succulent herbs | | |
| <i>Hordeetum leporini</i> Br.-Bl. 1936 | 28EA01 | 4 |
| Združba na nivoju razreda | | |
| Other community of the class | | |
| <i>Arrhenatherum elatius</i> -[<i>Stellarietea mediae</i>] | 28XX01 | 5 |
| Artemisietea vulgaris Lohm. et al. ex von Rochow 1951 | 29 | |
| Trajne in z vrstami osata bogate, zmerno suhe ruderalne združbe zmerno in submediteranske regije Evrope | | |
| Perennial and thistle-rich (sub)xerophilous ruderal vegetation of temperate and submediterranean regions of Europe | | |
| Onopordetalia acanthii Br.-Bl. et Tx. ex Klika et Hadač 1944 | 29A | |
| Subkserofilne ruderalne združbe, v katerih prevladujejo kratkoživeče trajnice zmernega pasu Evrope | | |
| Sub-xerophilous ruderal communities dominated by short-lived perennials of temperate Europe | | |
| Onopordion acanthii Br.-Bl. et al. 1936 | 29AA | |
| Kseromezofilne ruderalne združbe, v katerih prevladujejo vrste osata, v subkontinentalni srednji Evropi in severnem Balkanu | | |
| Thistle-dominated xero-mesophilous ruderal communities of subcontinental Central Europe and northern Balkans | | |
| <i>Potentillo argenteae-Artemisietum absinthii</i> Faliński 1965 | 29AA01 | 1 |
| <i>Carduo acanthoidis-Onopordetum acanthii</i> Soó ex Jarolimek et al. 1987 | 29AA02 | unpubl. (Šilc) |

| | | | |
|--|--------|----------------|-----|
| (syn. <i>Onopordetum acanthii</i> Br.-Bl. et al. 1936) | | | |
| Dauco-Melilotum Görs ex Rostański et Gutte 1971 | 29AB | | |
| Kseromezofilna ruderalna vegetacija, v kateri prevladujejo dvoletnice zmernege in subborealnega dela Evrope | | | |
| Xero-mesophilous ruderal vegetation dominated by biennial plants of temperate and sub-boreal Europe | | | |
| <i>Melilotum albo-officinale</i> Sissingh 1950 | 29AB01 | 65 | |
| (syn. <i>Echium-Melilotetum</i> R. Tx. 1947, incl. <i>Melilotus alba-Melilotus officinalis</i> comm.) | | | |
| <i>Tanacetum-Artemisietum vulgaris</i> Sissingh 1950 | 29AB02 | 18 | |
| <i>Dauco-Picridetum hieracioidis</i> Görs ex Seybold & T. Müller 1972 | 29AB03 | 33 | |
| <i>Odonitto-Ambrosietum artemisiifoliae</i> Jarolimek et al. 1997 | 29AB04 | 28 | |
| <i>Foeniculo-Artemisietum vulgaris</i> Poldimi 1980 | 29AB05 | 3 | |
| <i>Dauco-Crepidetum rhoeadifoliae</i> Hejny & Grüll in Hejny et al. 1979 | 29AB06 | unpubl. (Šilc) | |
| <i>Poo-Tussilaginetum farfarae</i> R. Tx. 1931 | 29AB07 | unpubl. (Šilc) | |
| <i>Poëtum humili-compressae</i> Bornkamm 1961 | 29AB08 | unpubl. (Šilc) | |
| Združbe na nivoju reda | | | |
| Other communities of the order | | | |
| <i>Equisetum arvense</i> -[<i>Onopordetalia</i>] | 29AX01 | 3 | |
| <i>Poa compressa</i> -[<i>Onopordetalia</i>] | 29AX01 | unpubl. (Šilc) | |
| <i>Erigeron annuus</i> -[<i>Onopordetalia</i>] | 29AX01 | unpubl. (Šilc) | |
| <i>Calamagrostis epigejos</i> -[<i>Onopordetalia</i>] | 29AX01 | unpubl. (Šilc) | |
| Agropyretalia intermedio-repentis Oberd. et al. ex T. Müller et Görs 1969 | 29B | | |
| Antropogena ruderalna in motena subruderalna stepska travišča in zeliščne združbe hladnejših predelov zmernege pasu Evrope | | | |
| Anthropogenic ruderal and distributed semi-ruderal steppic grasslands and herblands of cool temperate Europe | | | |
| Convolutulo arvensis-Agropyrium repentis Görs 1966 | 29BA | | |
| Antropogena pol ruderalna in ruderalna travišča zmernege pasu Evrope | | | |
| Anthropogenic semi-ruderal and ruderal grasslands of temperate Europe | | | |
| <i>Lepido drabae-Agropyretum repentis</i> T. Müller & Görs 1969 | 29BA01 | 8 | |
| <i>Cynodonto-Sorghetum halepensis</i> (Laban 1975) Kojić 1979 | 29BA02 | 6 | |
| <i>Brachypodio-Agropyretum intermedii</i> Poldimi 1980 | 29BA03 | 2 | |
| <i>Diplotaxio tenuifoliae-Agropyretum repentis</i> Philippi in Th. Müller & Görs 1969 | 29BA04 | unpubl. (Šilc) | |
| Združba na nivoju reda | | | |
| Other communities of the order | | | |
| <i>Elymus repens</i> -[<i>Agropyretalia</i>] | 29BX01 | 30 | |
| Združba na nivoju razreda | | | |
| Other community of the class | | | |
| <i>Coryza canadensis</i> -[<i>Artemisietea</i>] | 29XX01 | 3 | |
| | 30 | 30 | |
| Galio-Urticetea Passarge ex Kopecký 1969 | | | |
| Z visokimi steblikami bogata polnaravna robna vegetacija s hranili bogatih robov gozdov in grmišč ter vodotokov Evrope | | | |
| Tall-herb semi-natural tall saum vegetation of nutrient-rich fringes of forests and scrub and of water courses of Europe | | | |
| Arctio lappae-Artemisietalia vulgaris Dengler 2002 | | | |
| | | | 30A |

- Trajne ruderalne združbe, kjer prevladujejo kratkoživeče trajnice na vlažnejših tleh hladnejših predelov zmernega pasu Evrope
 Perennial ruderal communities dominated by short-lived perennials on moister soils of cool temperate Europe
- Arction lappae R. Tx. 1937**
 30AAA
- Trajne ruderalne združbe, kjer prevladujejo kratkoživeče trajnice na vlažnejših tleh hladnejših predelov zmernega pasu Evrope
 Perennial ruderal communities dominated by short-lived perennials on moister soils in cooler climates of Europe
- 30AA01 61
 30AA02 1
 30AA03 42
 30AA04 18
 30AA05 2
 30AA06 10
 30B
- Arctio-Artemisietum vulgaris** Oberd. et al. ex Seybold & T. Müller 1972
Balloto-Malvetum sylvestris Gutte 1966
Urtico urentis-Chenopodietum boni-henrici R. Tx. 1937
Lamio-Ballotetum nigrae Lohm. ex Seybold & T. Müller 1972
Lamio albi-Cornietum maculati Oberd. 1957
Ballota nigra ssp. *foetida* comm.
- Galio aparines-Alliarietalia** Oberd. in Görs et T. Müller 1969
 Ruderalne in polnaravne združbe mezofilnih in nitrofilnih visokih trajnic
 Ruderal and semi-natural communities of tall mesophilous and nitrophilous perennials
- Geo-Alliarion Lohmeyer et Oberd. in Görs et T. Müller 1969**
 Nitrofilne združbe visokih steblik na toplih gozdnih in grmiščnih robovih v zmerni coni Evrope
 Nitrophilous tall-herb communities of thermophilous forest and scrub margins in temperate zone of Europe
- Sambucetum ebuli** Felföldy 1942
Alliario-Chaerophylletum tenui Lohm. 1949
Toridilietum japonicae Lohm. ex Görs & T. Müller 1969
Urtico-Cruciatetum laevipedis Dierschke 1974
Urtico-Parietarietum officinalis Klotz 1985
Geo urbani-Chelidoniumetum maji Jarolimek et al. 1997
Physalidetum alkekengi Kaiser 1926
Ornithogalo pyrenaici-Oplismenietum undulatifolii Dakskobler & Vreš 2009
Veronico sublobatae-Alliarietum petiolatae Jarolimek et al. 1997
Geranium robertianum-Galium aparine comm.
Impatiens parviflora comm.
- Aegopodion podagrariae R. Tx. 1967**
 Nitrofilne združbe visokih steblik mezofilnih robov in čistin (posek) gozdov in grmišč v zmerni in borealni coni Evrope
 Nitrophilous tall-herb communities of mesic margins and clearings of forests and scrub in temperate and boreal zones of Europe
- Chaerophylletum aurei** Oberd. 1957
Aegopodio-Menthetum longifoliae Hilbig 1972
Phalarido-Petasitetum officinalis Schwickerath 1933
Agropyro-Aegopodietum podagrariae R. Tx. 1967
Anthriscetum sylvestris Hadač 1978
Urtico-Lamietum orvalae Čarni 1994
Chaerophylletum bulbosi R. Tx. 1937
Smyrniyetum perfoliati Poldini 1989
Galeopsis tetralix comm.

| | | |
|--|--------|-------------------------|
| <i>Rubus caesius</i> comm. | 30BC10 | 11 |
| <i>Urtica dioica</i> comm. | 30BC11 | 2 |
| Circaeo lutetianae-Stachyretalia sylvaticae Passarge 1967 | 30C | |
| Ruderalne in polnaravne združbe visokoraslih mezofilnih in nitrofilnih trajnic | | |
| Ruderal and semi-natural communities of tall mesophilous and nitrophilous perennials | | |
| Atropion bellae-donnae Aichinger 1933 | 30CA | |
| Vrstno bogate združbe čistin (posek) na s hranilni bogatih tleh v območju mešanih gozdov v srednji in zahodni Evropi | | |
| Herb-rich clearing vegetation on nutrient-rich soils of nemoral zone of Central and Western Europe | | |
| <i>Eupatorium cannabini</i> R. Tx. 1937 | 30CA01 | 8 |
| <i>Epilobio-Atropetum bellae-donnae</i> R. Tx. 1931 | 30CA02 | unpubl. (Marković 1982) |
| <i>Arctium nemorosi</i> R. Tx. 1950 | 30CA03 | unpubl. (Marković 1982) |
| <i>Telekietum speciosae</i> Tregubov 1941 | 30CA04 | unpubl. (Marković 1982) |
| Impatienti noli-tangere-Stachyon sylvaticae Görs ex Mucina 1993 | 30CB | |
| Nitrofilne združbe visokih steblik na zasenčenih gozdnih robovih in čistinah (posekah) od kolinskega do submontanskega pasu v srednji Evropi | | |
| Nitrophilous tall-herb communities of shaded forest margins and clearings on loamy from colline to submontane belts in Central Europe | | |
| <i>Epilobio-Geranium robertianum</i> Lohm. ex Görs & T. Müller 1969 | 30CB01 | 2 |
| <i>Stachyo sylvaticae-Impatiens noli-tangere</i> Hilbig 1972 | 30CB02 | unpubl. (Šilc) |
| Convolvuletalia sepium Tx. ex Mucina 1993 | 30D | |
| Polnaravna robna vegetacija na bregovih rek in drugih vodnih teles zmernega pasu Evrope in Sredozemlja | | |
| Semi-natural saum vegetation on banks of rivers and other water bodies of temperate Europe and Mediterranean | | |
| Senecionion fluviatilis Tx. ex Moor 1958 | 30DA | 3 |
| Nitrofilna visoka steblikovja z ovjalkami na rečnih bregovih in ob kanalih v srednji Evropi | | |
| Tall-herb nitrophilous weil vegetation of river banks and ditches of Central Europe | | |
| <i>Cuscuta europaea-Convolutetum sepium</i> R. Tx. 1947 | 30DA01 | 35 |
| <i>Senecionetum fluviatilis</i> T. Müller ex Straka in Mucina 1993 | 30DA02 | 7 |
| <i>Calystegio-Equisetetum telmateiae</i> S. Jovanović 1993 | 30DA03 | unpubl. (Šilc) |
| <i>Helianthus tuberosus</i> comm. | 30DA04 | 3 |
| <i>Impatiens glandulifera</i> comm. | 30DA05 | 13 |
| <i>Phragmites australis</i> comm. | 30DA06 | 2 |
| <i>Fallopia japonica</i> comm. | 30DA07 | 5 |
| <i>Rudbeckia laciniata</i> comm. | 30DA08 | 2 |
| <i>Solidago gigantea</i> comm. | 30DA09 | 28 |
| Združbi na nivoju razreda | | |
| Other communities of the class | | |
| <i>Rubus caesius</i> -[<i>Galio-Urticetea</i>] | 30XX01 | 3 |
| <i>Urtica dioica</i> -[<i>Galio-Urticetea</i>] | 30XX02 | 30 |
| Epilobietea angustifolii R. Tx. & Preisling ex von Rochow 1951 | | |
| Naravna pionirska vegetacija visokih steblik na gozdnih robovih in čistinah (posekah) na kislilih tleh v Evrosibiriji | | |
| Spontaneous pioneer tall-herb vegetation of acidic soils of forest margins and clearings of Eurosiberia | | |

| | | | |
|--|--------|----|--|
| <i>Galeopsis-Senecionetalia sylvatici</i> Passarge 1981 | | | |
| Naravna pionirska vegetacija visokih steblik na gozdnih robovih in posekah na kislilih tleh v Evrosibiriji | | | |
| Spontaneous pioneer tall-herb vegetation of acidic soils of forest margins and clearings of Eurosiberia | | | |
| <i>Epilobion angustifolii</i> Oberd. 1957 | | | |
| Vegetacija visokih steblik na gozdnih robovih in čistinah (posekah) na kislilih tleh v srednji in zahodni Evropi | | | |
| Tall-herb vegetation of acidic soils of forest margins and clearings of Central and Western Europe | | | |
| <i>Digitali ambiguae-Calamagrostietum arundinaceae</i> Sillinger 1933 | 31AB01 | 8 | |
| <i>Pteridetum aquilini</i> Jouanne & Chouard 1929 | 31AB02 | 1 | |
| (incl. <i>Pteridium aquilinum</i> comm.) | | | |
| | | | |
| VEGETACIJA ZMERNE CONE | | | |
| Vegetation of temperate zones | | | |
| | | | |
| VEGETACIJA TRAVNIKOV, RESAV IN ROBOV V ZMERNEM PASU | | | |
| Vegetation of temperate grasslands, heathlands and fringes | | | |
| | | | |
| <i>Molinio-Arrhenatheretea</i> R. Tx. 1937 | 32 | 9 | |
| Antropogeni pašniki in travniki na globljih bolj ali manj rodovitnih tleh Evrazije | | | |
| Anthropogenic pastures and meadows on deeper, more or less fertile soils of Eurasia | | | |
| <i>Molinietalia</i> Koch 1926 | 32A | 4 | |
| Boreotemperatni in delno subarktčni vlažni košeni travniki na mineralnih in šotnih tleh | | | |
| Boreo-temperate and partly subarctic wet mown meadows on mineral and peaty soils | | | |
| <i>Molinion caeruleae</i> Koch 1926 | 32AA | 14 | |
| Vlažni negnojeni travniki v nižinah zmernega pasu Evrope | | | |
| Wet unfertilised meadows at low-altitudes of temperate Europe | | | |
| <i>Selimo-Molinietum caeruleae</i> Kuhn 1937 | 32AA01 | 36 | |
| <i>Gentiano asclepiadeae-Molinietum caeruleae</i> Oberd. 1957 | 32AA02 | 2 | |
| <i>Gentiano pneumonanthes-Molinietum litoralis</i> Ilijanić ex Kuyper et al. 1978 | 32AA03 | 63 | |
| <i>Junco-Molinietum</i> Preising in R. Tx. & Preising ex Klapp 1954 | 32AA04 | 36 | |
| <i>Sanguisorbo-Festucetum commutatae</i> Bal.-Tul. 1959 | 32AA05 | 15 | |
| <i>Sanguisorbo-Festucetum pratensis</i> Selisakar in Čarni et al. 1992 nom. nud. | 32AA06 | 5 | |
| <i>Carici davallianae-Molinietum</i> Španiková 1978 | 32AA07 | 28 | |
| <i>Schoeno ferruginei-Molinietum caeruleae</i> Martinič 2001 | 32AA08 | 52 | |
| <i>Deschampsio-Plantaginetum altissimae</i> Ilijanić 1979 | 32AA09 | 49 | |
| <i>Plantagini altissimae-Molinietum caeruleae</i> Marchiori & Sburliano 1982 | 32AA10 | 8 | |
| <i>Junco conglomerati-Betonicetum</i> Zelnik 2005 | 32AA11 | 62 | |
| <i>Schoeno nigricantis-Molinietum caeruleae</i> Martinič 1991 | 32AA12 | 19 | |

| | | |
|---|--------|-------------------------|
| <i>Euphorbia villosae-Molinietum caeruleae</i> Accetto 2009 | 32AA13 | 13 |
| <i>Molinia caerulea</i> comm. (incl. <i>Molinietum</i> W. Koch 1926) | 32AA14 | 40 |
| <i>Carex gracilis</i> comm. (sensu Poldini 1989) | 32AA15 | 10 |
| <i>Menyanthes trifoliata</i> comm. | 32AA16 | 5 |
| <i>Calthion palustris</i> R. Tx. 1937 | 32AB | 3 |
| Vlažni travniki, pašniki in zeliščne združbe na rodovitnih mineralnih tleh zmernega pasu Evrope | | |
| Wet meadows, pastures and herblands on fertile mineral soils of temperate Europe | | |
| <i>Angelico-Cirsietum oleracei</i> R. Tx. 1937 | 32AB01 | 26 |
| <i>Cirsietum rivularis</i> Nowiński 1928 | 32AB02 | 7 |
| <i>Scirpetum sylvatici</i> Raški 1931 | 32AB03 | 9 |
| <i>Dactylorhizo-Scirpetum georgiani</i> Zelnik 2004 | 32AB04 | 5 |
| <i>Filipendulo-Petastion</i> Br.-Bl. ex Duvigneaud 1949 | 32AC | |
| Vlažna visoka steblikovja na rodovitnih mineralnih tleh zmernega pasu Evrope | | |
| Wet tall herblands on fertile mineral soils of temperate Europe | | |
| <i>Filipendulo-Geranietum palustris</i> W. Koch 1926 | 32AC01 | 25 |
| <i>Lysimachio vulgaris-Filipenduletum</i> Bal.-Tul. 1978 | 32AC02 | 6 |
| <i>Valeriano officinali-Filipenduletum</i> Sissingh in Westhoff et al. ex van Donselaar 1961 | 32AC03 | 8 |
| <i>Epilobio hirsuti-Filipenduletum</i> Sougnéz 1957 nom. invers. propos. | 32AC04 | 1 |
| <i>Mentha aquatica-Juncetum effusi</i> Aichinger 1963 nom. invers. propos. | 32AC05 | 1 |
| <i>Filipendulo-Menthetum longifoliae</i> Zlinská 1989 | 32AC06 | 3 |
| <i>Chaerophyllo hirsuti-Filipenduletum</i> Niemann et al. 1973 | 32AC07 | 1 |
| <i>Aconito-Filipenduletum</i> Seliškar et al. 1994 nom. ined. | 32AC08 | 1 |
| <i>Veronico longifoliae-Filipenduletum</i> Seliškar et al. 1994 nom. ined. | 32AC09 | 2 |
| <i>Lysimachia vulgaris</i> comm. | 32AC10 | 1 |
| <i>Iridetum sibiricae</i> Philippi 1960 | 32AC11 | unpubl. (Seliškar 1996) |
| <i>Deschampsion cespitosae</i> Horvatić 1930 | 32AD | |
| Travniki na poplavnih aluvialnih ravninah v subcelinskih predelih Evrope | | |
| Floodplain alluvial meadows of sub-continental regions of Europe | | |
| <i>Succisello inflexae-Deschampsietum cespitosae</i> Ellmauer in Ellmauer & Mucina 1993 | 32AD01 | 92 |
| <i>Agrostio-Juncetum conglomerati</i> Segulja 1974 | 32AD02 | 52 |
| <i>Potentillo reptantis-Allietum angulosi</i> Zelnik 2005 | 32AD03 | 11 |
| <i>Phragmiti-Euphorbietum palustris</i> Issler 1932 | 32AD04 | 1 |
| <i>Serratulo-Plantagnetum altissimae</i> Ilijanić 1968 | 32AD05 | unpubl. (Čarni) |
| <i>Veronico longifoliae-Euphorbietum lucidae</i> Bal.-Tul. & Knežević 1975 | 32AD06 | unpubl. (Čarni) |
| Združbe na nivoju reda | | |
| Other communities of the order | | |
| <i>Filipendula ulmaria</i> -[<i>Molinietalia</i>] | 32AX01 | 4 |
| <i>Succisella inflexa</i> -[<i>Molinietalia</i>] | 32AX02 | 4 |
| <i>Eriophorum latifolium</i> -[<i>Molinietalia</i>] | 32AX03 | 1 |
| <i>Arrhenatheretalia elatioris</i> Tx. 1931 | 32B | |

| | | | |
|---|--------|-------------------------|--|
| Pašniki in travniki na dobro prepustnih razmeroma rodovitnih mineralnih tleh | | | |
| Pastures and meadows on well-drained relatively fertile mineral soils | | | |
| <i>Arrhenatherion elatioris</i> Luquet 1926 | | | |
| Travniki na dobro prepustnih razmeroma rodovitnih mineralnih tleh v nižinah zahodne in srednje Evrope | | | |
| Meadows of well-drained, relatively fertile mineral soils at lower altitudes of Western and Central Europe | | | |
| <i>Pastinaco-Arrhenatheretum</i> Passarge 1964 | 32BA | | |
| <i>Ranunculo bulbosi-Arrhenatheretum</i> Ellmauer in Ellmauer & Mucina 1993 | 32BA01 | 103 | |
| <i>Ranunculo repentis-Alopecuretum pratensis</i> Ellmauer in Ellmauer & Mucina 1993 | 32BA02 | 38 | |
| <i>Ononido-Arrhenatheretum</i> (Tomažič & Horvatič 1941) Ilijanić & Šegulja 1983 | 32BA03 | 27 | |
| <i>Filipendulo vulgaris-Arrhenatheretum</i> Hundt & Hübl 1983 | 32BA04 | 1 | |
| <i>Cichorietum intybi</i> R. Tx. ex Sissingh 1969 | 32BA05 | 4 | |
| <i>Bromo-Cynosuretum cristati</i> Horvatič 1930 | 32BA06 | 9 | |
| <i>Triseti-Centaureetum macroptili</i> Zelnik 2007 | 32BA07 | 36 | |
| <i>Festucetum pratensis</i> Soó (1938) 1955 | 32BA08 | 28 | |
| <i>Festuco-Agrostietum</i> Horvat 1962 nom. nud. | 32BA09 | 10 | |
| <i>Gaudimio-Festucetum pratensis</i> Seliškar 1986 nom. nud. | 32BA10 | 3 | |
| <i>Lolietum multiflorae</i> Dietl & Lehmann 1975 | 32BA11 | 10 | |
| <i>Centaureo carnolicae-Arrhenatheretum elatioris</i> Oberd. 1963 corr. Poldini & Oriolo 1994 | 32BA12 | 3 | |
| <i>Anthoxantho-Brometum erecti</i> Poldini 1980 | 32BA13 | unpubl. (Čarni) | |
| <i>Holcus lanatus</i> comm. | 32BA14 | 2 | |
| <i>Festuca rubra</i> comm. | 32BA15 | 8 | |
| (incl. <i>Festucetum rubrae</i> Seliškar 1986 nom. ined.) | 32BA16 | 11 | |
| <i>Dactylis-Festuca pratensis</i> comm. | 32BA17 | 4 | |
| <i>Arrhenatherion</i> comm. | 32BA18 | 17 | |
| <i>Arrhenatheretum elatioris</i> s. lat. | 32BA19 | 63 | |
| <i>Cynosurion cristati</i> R. Tx. 1947 | 32BC | 2 | |
| Pašniki na razmeroma prepustnih, rodovitnih, mineralnih tleh v nižinah srednje in zahodne Evrope | | | |
| Pastures of relatively well-drained, fertile mineral soils at lower altitudes in Central and Western Europe | | | |
| <i>Lolium perennis-Cynosuretum cristati</i> Br.-Bl. & De Leeuw 1936 nom. invers. propos. | 32BC01 | 11 | |
| <i>Lolietum perennis</i> Gams 1927 | 32BC02 | 45 | |
| <i>Festuco commutatae-Lolietum</i> nom. nud. | 32BC03 | unpubl. (Čop, Seliškar) | |
| <i>Plantagini-Prunellalia</i> Ellmauer & Mucina 1993 | 32C | | |
| Z zelišči bogate, delno pohojene združbe na zasenčenih rastiščih zmernega in borealnega pasu Evrope | | | |
| Herb-rich, slightly trampled communities of shaded habitats of temperate and boreal Europe | | | |
| <i>Alchemillo-Ranunculion repentis</i> Passarge 1979 | 32CA | | |
| Z zelišči bogate, delno pohojene združbe na zasenčenih rastiščih zmernega in borealnega pasu Evrope | | | |
| Herb-rich, slightly trampled communities of shaded habitats of temperate and boreal Europe | | | |
| <i>Prunello-Ranunculetum repentis</i> Winterhoff 1963 | 32CA01 | 11 | |
| <i>Juncetum macri</i> (Diemont et al. 1940) R. Tx. 1950 | 32CA02 | 2 | |
| <i>Oxalido-Duchesneetum indicae</i> Jackowiak 1992 | 32CA03 | unpubl. (Šilc) | |

| | | |
|---|--------|-------------------------|
| Poo alpinae-Trisetetalia Ellmauer et Mucina 1993 | 32D | |
| Mezofilni travniki in pašniki na visokih nadmorskih višinah zmernega pasu Evrope | | |
| High-altitude mesic hay meadows and pastures of temperate Europe | | |
| Poion alpinae Gams ex Oberd. 1950 | 32DA | |
| Pašniki govoda na rodovitnih tleh v subalpinskem pasu v Alpah in Karpatih | | |
| Cattle pastures of fertile soils in sub-alpine belt of the Alps and Carpathians | | |
| <i>Crepido-Festucetum rubrae</i> Lüdi 1948 | | |
| Trisetio flavescens-Polygonion bistortae Br.-Bl. et Tx. ex Marschall 1947 | 32DA01 | unpubl. (Seliškar 1996) |
| Mezofilni montanski travniki na rodovitnih mineralnih tleh v gorovjih srednje Evrope | 32DB | |
| Mesic montane meadows on fertile mineral soils of the Central European mountain ranges | | |
| <i>Astrantio-Trisetetum</i> Knapp & Knapp 1952 | | |
| Poion supinae Rivas-Mart. & Géhu 1978 | 32DB01 | 45 |
| Močno pohojeni pašniki na visokih nadmorskih višinah v gorovjih zmernega pasu Evrope | 32DC | |
| Heavily-trampled pastures at high altitudes of mountain ranges of temperate Europe | | |
| <i>Alchemillo-Poetum supinae</i> Aichinger 1933 corr. Oberd. 1971 | | |
| <i>Alchemillo-Trisetetum</i> Horvat ex Horvat et al. 1974 | | |
| Potentillo-Polygonetalia avicularis Tx. 1947 | 32DC01 | 3 |
| Občasno poplavljen motena, s hranili bogata travišča zmernega pasu Evrope | 32DC02 | unpubl. (Čarni) |
| Temporarily flooded disturbed, nutrient-rich grasslands of temperate Europe | 32E | |
| Potentillion anserinae Tx. 1947 | 32EA | |
| Pritlične zeliščne združbe raznolikih rastišč v vlažno-suhih ali brakično-sladkovodnih razmerah | | |
| Low herb communities of variable habitats with wet-dry, or brackish-fresh habitat conditions | | |
| <i>Ranunculo repentis-Alopecuretum geniculati</i> R. Tx. 1937 | | |
| <i>Rumici crispi-Agrostietum stoloniferae</i> Moor 1958 | 32EA01 | 1 |
| <i>Dactylido-Festucetum arundinaceae</i> R. Tx. ex Lohm. 1953 | 32EA02 | 34 |
| <i>Junco inflexi-Menthetum longifoliae</i> Lohm. 1953 | 32EA03 | 1 |
| <i>Trifolio-Agrostietum stoloniferae</i> Marković 1978 | 32EA04 | 45 |
| <i>Potentilletum anserinae</i> Rapaics 1927 | 32EA05 | 9 |
| Združbe na nivoju razreda | 32EA06 | unpubl. (Šilc) |
| Other communities of the class | | |
| <i>Echium vulgare</i> -[<i>Molinio-Arrhenatheretea</i>] | 32XX01 | 6 |
| <i>Festuca rubra</i> ssp. <i>rubra</i> -[<i>Molinio-Arrhenatheretea</i>] | 32XX01 | 58 |
| <i>Arrhenatherum elatius</i> -[<i>Molinio-Arrhenatheretea</i>] | 32XX01 | 4 |
| <i>Galium mollugo</i> -[<i>Molinio-Arrhenatheretea</i>] | 32XX01 | 3 |
| <i>Calamagrostis epigejos</i> -[<i>Molinio-Arrhenatheretea</i>] | 32XX01 | 3 |

33

Trifolio-Geranietea sanguinei T. Müller 1962

Vegetacija termofilnih gozdnih robov in visokih steblik na s hranili siromašnih rastiščih od submediteranske do subborealne cone Evrope in Makaronezije

Thermophilous woodland fringe and tall-herb vegetation of nutrient-poor sites in the submediterranean to subboreal zones of Europe and Macaronesia

Origanetalia vulgaris T. Müller 1962

33A

- Mezofilna in subkserofilna vegetacija robov in visokih steblik na s hranili siromašnih, z bazami bogatih rastiščih v zmernem do subborelnem pasu Evrope
 Mesophilous and subxerophilous fringe and tall-herb vegetation of nutrient-poor, base-rich sites in temperate to subboreal Europe
Trifolion medii T. Müller 1962
 33AAA
- Mezofilna do subkserofilna vegetacija robov na s hranili siromašnih tleh na nižjih nadmorskih višinah zmerne pasu Evrope
 Mesophilous and subxerophilous fringe vegetation on nutrient poor soils at lower altitudes of temperate Europe
Agrimonia-Victetum cassubicae Passarge 1967 nom. invers. propos.
 33AA01 17
Trifolio-Agrimoniolum eupatorii Müller 1962
 33AA02 28
Knautio-Melampyretum nemorosi Čarni 1997
 33AA03 14
Trifolio medii-Melampyretum nemorosi Dierschke 1973
 33AA04 29
Melampyrum pratense comm.
 33AA05 18
 33B
- Antherrico ramosi-Geraniatalia sanguinei Julve ex Dengler in Dengler et al. 2003**
 Kserofilna vegetacija robov in visokih steblik na s hranili revnih, z bazami bogatih tleh v submediteranskem, zmernem in subborelnem območju Evrope
 Xerophilous fringe and tall-herb vegetation of nutrient-poor, base-rich soils in the submediterranean, temperate and subboreal zones of Europe
Geranium sanguinei R. Tx. in T. Müller 1962
 33BA
- Kserofilna vegetacija robov in visokih steblik subkontinentalne zahodne in srednje Evrope
 Xerophilous fringe and tall-herb vegetation of subcontinental Western and Central Europe
Origano-Campanuletum bononiensis Čarni et al. 2005
 33BA01 7
Bupleuro longifolii-Laserpitietum latifolii T. Müller 1978
 33BA02 14
Laserpitietum sileris Springer 1987
 33BA03 10
Peucedanetum cervariae Kaiser 1926
 33BA04 13
Knautio-Dictamnatum albi Čarni 1997
 33BA05 11
Scabioso hladnikianae-Grafietum golakae Čarni 2007
 33BA06 10
- Dictamno-Ferulagion galbaniferae (van Gils et al. 1975) de Foucault et al. ex Čarni & Dengler in Mucina et al. 2009**
 33BC
- Kserofilna vegetacija robov in visokih steblik v Ilirski in Dinarski regiji Balkanskega polotoka
 Xerophilous fringe and tall-herb vegetation of the Illyrian and Dinaric regions of the Balkan Peninsula
Scorzonero villosae-Trifolietum alpestris Čarni 1997
 33BC01 1
Libanotido-Laserpitietum sileris van Gils et al. 1975
 33BC02 9
Cirsio pannonicae-Peucedanetum cervariae van Gils et al. 1975
 33BC03 1
Cirsio-Clematidetum silaifolii van Gils et al. ex Čarni 1997
 33BC04 1
Origano-Onidietum silaifolii van Gils et al. ex Čarni 1997
 33BC05 10
Veronicetum barrelieri-jacquinii van Gils et al. 1975 corr. Čarni 1997
 33BC06 1
Verbasco chaixii-Elymetum hispidi Poldini 2009
 33BC07 2
Vicia cracca comm.
 33BC08 4
- Festuco-Brometea Br.-Bl. & Tx. ex Soó 1947**
 34
- Vegetacija suhih travnikov in step na većinoma z bazami in koloidi bogatih tleh od submediteranske do hemiborealne cone Evrope
 Dry grassland and steppe vegetation of mostly base- and colloid-rich soils of the submediterranean to the hemiboreal zones of Europe
Brometalia erecti Koch 1926
 34A
- Mezokserofilni travniki na globokih apnenčastih tleh

| | | | |
|---|--------|-------------------------|--|
| Meso-xerophilous grasslands on deep calcareous soils | | | |
| Bromion erecti Koch 1926 | 34AA | 2 | |
| Mezokserofilni in bazofilni travniki v suboceanskih predelih toplejšega zmernega pasu Evrope | | | |
| Meso-xerophytic basiphilous grasslands in sub-oceanic regions of warm-temperate Europe | | | |
| <i>Onobrychido-Brometum</i> T. Müller 1966 | 34AA01 | 257 | |
| <i>Hypochoerido-Festucetum rupicolae</i> Steinbuch 1995 | 34AA02 | 54 | |
| <i>Bromo-Danthonietum calycinae</i> Šugar 1973 | 34AA03 | 109 | |
| <i>Bromo-Plantaginietum mediae</i> Horvat ex Horvat et al. 1974 | 34AA04 | 34 | |
| (syn. <i>Bromo-Brachypodietum pinnati</i> Petkovšek 1977) | | | |
| <i>Scabioso hladnikiana-Caricetum humilis</i> (Horvat 1931) Tomažič 1941 | 34AA05 | 39 | |
| <i>Festuco pseudovinae-Centaureetum rhenanae</i> Tomažič 1941 | 34AA06 | 22 | |
| <i>Globulario cordifoliae-Andropogon ischaemi</i> Seljak 1974 nom. nud. | 34AA07 | 3 | |
| <i>Bromo-Festucetum sulcatae</i> Oberd. 1957 | 34AA08 | 2 | |
| <i>Seslerio-Brometum</i> Oberd. 1957 | 34AA09 | 4 | |
| <i>Seslerio-Koelerietum</i> Oberd. 1957 | 34AA10 | 1 | |
| <i>Gladiolo illyrico-Molinietum litoralis</i> Horvat ex Gaži-Baskova & Šegulja 1978 nom. invers. propos. | 34AA11 | 1 | |
| <i>Seslerietum kalnikensis</i> Horvat ex Karačić 1964 | 34AA12 | unpubl. (Čarni) | |
| <i>Pediculari julici-Brometum</i> Seliškar 1996 nom. inval. | 34AA13 | unpubl. (Seliškar 1996) | |
| <i>Potentillo pusillae-Teucrietum subspicatae</i> Seliškar 1996 nom. inval. | 34AA14 | unpubl. (Seliškar 1996) | |
| Scorzonero villosae-Chrysopogonetalia grylli Horvatić et Horvatić 1963 | 34B | 19 | |
| Objadranski suhi stepski submediteranski pašniki v predalpski, ilirski in dinarski regiji | | | |
| Amphiadriatic dry steppic submediterranean pastures of Prealpine, Illyrian and Dinaric regions | | | |
| Scorzonerion villosae Horvatić 1963 | 34BA | | |
| Ilirsko-dinarski submediteranski suhi pašniki (tudi travniki) na globoki dekalificirani tera rosi in ilovnatih flišnih substratih | | | |
| Illyrian-Dinaric submediterranean xeric pasture on deep decalcified terra rossa soils and argillaceous flysch substrates | | | |
| <i>Danthonio-Scorzoneretum villosae</i> Horvat & Horvatić in Horvatić 1963 | 34BA01 | 83 | |
| (incl. <i>Chrysopogoni-Euphorbietum nicaeensis</i> Horvatić 1958) | | | |
| <i>Gentianello pilosae-Brometum erecti</i> Dakskobler & Završnik 2009 | 34BA02 | 10 | |
| <i>Scorzonero-Hypochoeretum maculatae</i> Horvatić 1958 nom. nud. | 34BA03 | unpubl. (Čarni) | |
| Chrysopogono-Saturejon Horvat & Horvatić 1934 | 34BB | | |
| Predalpsko-ilirski stepski pašniki na plitvih tleh na apnencu | | | |
| Praealpic-Illyrian steppic pastures on shallow calcareous soils | | | |
| <i>Genisto sericeae-Seslerietum juncifoliae</i> Poldini 1980 | 34BB01 | 12 | |
| (syn. <i>Genisto sericeae-Seslerietum kalnikensis</i> Dakskobler 2005 nom. prov.) | | | |
| <i>Carici humilis-Centaureetum rupestris</i> Horvat & Horvatić 1934 | 34BB02 | 67 | |
| (syn. <i>Stipo-Caricetum humilis</i> Trinajstić 1987) | | | |
| <i>Genisto holoptalae-Caricetum mucronatae</i> Horvat 1956 | 34BB03 | 20 | |
| <i>Centaureo dichroanthiae-Globularietum cordifoliae</i> Pignatti 1953 | 34BB04 | 1 | |
| <i>Saturejo-Caricetum humilis</i> Trinajstić 1999 | 34BB05 | unpubl. (Čarni) | |
| <i>Chrysopogono-Centaureetum cristatae</i> Ferlan & Giacomini 1955 | 34BB06 | 3 | |

- Saturejo liburnicae-Seslerietum calcariae* Dakskobler 2006 nom. inval.
Primula auricula comm.
Leontodonti brumatii-Seslerietum calcariae Dakskobler et al. 2012
- Calluno-Ulicetea Br.-Bl. et Tx. ex Klika 1948**
 Pritlikavi grmički in resave z volkom na kisljih tleh od nižine do montanskega pasu
 Dwarf-shrub and mat-grass heaths on acidic soils from the planare to montane belts
Nardetalia strictae Preising 1950
 Volkovja na s hranili siromašnih tleh v nižini in srednjem višinskem pasu v zmernem, borealnem in subarktičnem območju Evrope
 Mat-grass swards on nutrient-poor soils at low and mid-altitudes of the temperate, boreal and subarctic regions of Europe
- Violion caninae Schwickerath 1944**
 Oligotrofni pašniki na tleh siromašnih s karbonati od nižin do submontanskega pasu v zahodni in srednji Evropi
 Oligotrophic pastures on lime-poor soils in planare to submontane belts of western and Central Europe
Polygalo-Nardetum (Preising 1953) Oberd. 1957
Festuco-Chamaespartietum sagittalis Issler 1927 nom. mut. propos.
Arnico-Nardetum Horvat et al. 1974
Festucetum capillatae Horvat 1930
- Nardo-Agrostion tenuis Sillinger 1933**
 Suhli pašniki z volkom od submontanskega do zgornjemontanskega pasu v gorovjih srednje Evrope in severnega Balkana
 Mat-grass dry pastures of submontane to supramontane belts of the mountain ranges of Central Europe and the northern Balkan Peninsula
Homogyno alpinae-Nardetum Mráz 1956
Calluno-Festucion capillatae Horvat ex Horvat et al. 1974
- Oligotrofni pašniki na tleh, siromašnih s karbonati, od nižin do submontanskega pasu na zahodnem Balkanu
 Oligotrophic pastures on lime-poor soils in planare to submontane belts of the western Balkan Peninsula
Genisto pilosae-Callunetum Braun 1915 nom. invers. propos.
Genisto sagittalis-Callunetum Horvat 1931 nom. invers. propos.
Vaccinio myrtilli-Callunetum Bükler 1942 nom. invers. propos.
Verbascum austriacum-Festuca rupicola comm.
- Helianthemetea guttati (Br.-Bl. in Br.-Bl. et al. 1952) Rivas Goday et Rivas-Mart. 1963**
 Sredozemske acidofilne združbe, ki jih gradijo enoletna pritlikava zelišča in trave
 Mediterranean acidophilous communities of annual low-grown herbs and grasses
- Thero-Airetalia Oberd. 1957**
 Pionirska vegetacija na kisljih plitvih tleh v atlantski regiji z milimi zimami, subborealnem območju Evrope in na Madeiri
 Pioneer vegetation on acidic shallow soils of winter-mild atlantic and sub-boreal regions of Europe and Madeira
- Thero-Airion R. Tx. ex Oberd. 1957**
 Pionirska vegetacija na kisljih plitvih tleh v atlantski regiji z milimi zimami in v subborealni Evropi
 Pioneer vegetation on acidic shallow soils of winter-mild atlantic and sub-boreal regions of Europe
Filagini-Vulpetium Oberd. 1938

- 37
37A
- Koelerio-Corynephoretea Klika in Klika & Novák 1941**
Pionirska vegetacija na plitvih slabo razvitih tleh v površinskih skalah v zmernem pasu in borealni regiji Evrope, severnoatlantskih otokih in na Grenlandiji
Pioneer vegetation on shallow primitive soils and rocky outcrops of temperate and boreal regions of Europe, North Atlantic islands and Greenland
- Alyso-Sedetalia Moravec 1967**
Pionirska travišča in terofiške trate na apnenčastih nerazvitih tleh v zmernem pasu
Temperate pioneer grasslands and therophyte swards on calcareous immature soils
- Alyso alyssoidis-Sedion Oberd. et T. Müller in T. Müller 1961**
Termofilne naskalne združbe na površinskih preperavajočih apnenčastih skalah
Thermophilous stoncrop communities of weathered calcareous rocks
- Saxifraga tridactylito-Poetum compressae* (Kreh 1945) Géhu & Leriq 1957
Alyso alyssoidis-Sedetum albi Oberd. & T. Müller in T. Müller 1961
Seslerio kalmikensis-Jovibarbetum hirtae Accetto 2002
Seslerio calcariae-Jovibarbetum hirtae Accetto 2002
Arabido alpinae-Myosotidetum strictae Accetto 2008
Geranium lucidum comm. (syn. *Asplenio-Geranium lucidi* Poldini 1980) sensu Poldini 1989
Cerastietum pumili Oberd. & T. Müller in T. Müller 1961
Petrorhagia-Tortula ruralis comm.
Saxifraga tridactylites comm.
Orlayetum grandiflorae Poldini 1989
- 37AA 1
37AA01 1
37AA02 1
37AA03 14
37AA04 8
37AA05 10
37AA06 6
37AA07 unpubl. (Poldini 1985)
37AA08 4
37AA09 5
37AA10 unpubl. (Šilc)

VEGETACIJA LISTOPADNIH GOZDOV IN GRMIŠČ ZMERNEGA PASU
Vegetation of temperate broad-leaved forests and shrublands

- Rhamno-Prunetea Rivas Goday et Borja Carbonell ex Tx. 1962**
Grmiščni zastor kot sukcesijski stadij ali kot rob listopadnih gozdov v območju mešanih gozdov Evrope
Shrub mantle vegetation seral or marginal to broad-leaved forests of the nemoral zone of Europe
- Chelidonio-Robinetalia Jurko ex Hadač & Sofron 1980**
Subspontana antropogena grmišča in gozdni sestoji
Sub-spontaneous anthropogenic scrub and low woodlands
- Chelidonio-Acerion negundi L. Ishbirdin & A. Ishbirdin 1989**
Vzhodnoevropski spontani gozdiči in grmišča, kjer prevladuje *Acer negundo*
Eastern European spontaneous groves and scrub dominated by *Acer negundo*
- Sambuco-Aceretum negundi** Exner in Exner & Willner 2004
Chelidonio-Robinion Hadač & Sofron 1980
Gozdovi in grmišča robinije s plevelno zeliščno podrasjo na glinenih, svežih tleh v srednji in vzhodni Evropi
Robinia pseudoacacia groves and scrub with weedy understorey on loamy-clay, mesic soils of Central and Eastern Europe
- Chelidonio-Robinetum* Jurko 1969
Arctio-Sambucion nigrae Doing 1969
- 38 2
38A
38AA
38AA01 unpubl. (Šilc)
38AB
38AB01 unpubl. (Šilc)
38AC

| | | |
|---|---------|-----------------|
| Bezgova grmišča opuščanih in ruderalnih rastišč zahodne in srednje Evrope | | |
| Successional elder scrub in ruderal habitats of Western and Central Europe | | |
| <i>Ailanthetum altissimae</i> Dihorou 1970 | | unpubl. (Šilc) |
| <i>Bryonio dioicae-Sambucetum nigrae</i> Poldini et Vidali 1995 | | unpubl. (Čarni) |
| <i>Lamio orvalae-Sambucetum nigrae</i> Poldini ex Poldini & Vidali 1995 | | unpubl. (Čarni) |
| Združba na nivoju zveze | | |
| Other community of the alliance | | |
| <i>Sambucus nigra</i> -[<i>Arctio-Sambucion nigrae</i>] | 38AX01A | 11 |
| <i>Prunetalia spinosae</i> Tx. 1952 | 38B | 6 |
| Grmišča in zastorna vegetacija kot sukcesijski stadij ali kot rob listopadnih gozdov na območju mešanih gozdov Evrope | | |
| Scrub and mantel vegetation seral or marginal to broadleaved forests of nemoral zone of Europe | | |
| <i>Berberidion vulgaris</i> Br.-Bl. ex Tx. 1952 | 38BA | |
| Submediteranska in južno-zmerna termofilna grmiščna vegetacija južne in srednje Evrope | | |
| Submediterranean and south-temperate thermophilous scrub vegetation of Southern and Central Europe | | |
| <i>Ligustro-Prunetum</i> R. Tx. 1952 | | |
| <i>Omphalodo vernaе-Coryletum avellanae</i> Čarni 1997 | 38BA01 | 21 |
| <i>Galantho nivalis-Coryletum avellanae</i> Poldini 1980 | 38BA02 | 13 |
| <i>Fragulo-Prunetum mahaleb</i> Poldini 1980 | 38BA03 | 19 |
| <i>Fraxino-Cornetum hungariace</i> Čarni 1998 | 38BA04 | 12 |
| <i>Clematido-Rubetum ulmifolii</i> Poldini 1980 | 38BA05 | 9 |
| <i>Rubo ulmifolii-Ligustretum</i> Poldini 1989 | 38BA06 | 2 |
| <i>Fragulo rupestris-Cotinetum coggygriae</i> Poldini & Vidali 2002 | 38BA07 | 12 |
| (incl. <i>Cotinus coggygria</i> comm.) | 38BA08 | 11 |
| <i>Ostryo-Cornetum sanguineae</i> Čarni 1997 | 38BA09 | 10 |
| <i>Brachypodio rupestris-Ostryetum carpiniifoliae</i> Čarni 1997 | 38BA10 | 13 |
| <i>Hippophao-Berberidetum</i> Moor 1958 | 38BA11 | unpubl. (Čarni) |
| <i>Prunus spinosa</i> comm. | 38BA12 | 7 |
| <i>Carpino-Prunion spinosae</i> Weber 1974 | 38BB | |
| Mezofilne meje in grmišča na mezotrofnih, z bazami bogatih tleh v severnem zmernem pasu Evrope | | |
| Mesophilous hedges and scrub of mesotrophic, base-rich soils in the northern temperate zone of Europe | | |
| <i>Carpino-Prunetum</i> R. Tx. 1952 | | |
| <i>Pruno-Rubion radulae</i> Weber 1974 | 38BB01 | 20 |
| Združbe robid na nevtralnih in z bazami bogatih tleh zahodne in srednje Evrope | 38BC | |
| Bramble communities on neutral and base-rich soils in Western and Central Europe | | |
| <i>Rubo-Coryletum</i> Oberd. 1957 | | |
| <i>Sambucetalia racemosae</i> Oberd. ex Doing 1962 | 38BC01 | 16 |
| Bezgova in vrbova sukcesijska grmišča na s hranili bogatih sprsteninastih tleh na gozdnih čistinah (posekah) v srednji Evropi | 38C | |
| Seral elder and willow scrub of nutrient-rich mull soils of forest clearings fo Central Europe | | |
| <i>Sambuco-Salicion capreae</i> Tx. et Neumann ex Oberd. 1957 | 38CA | |
| Bezgova in vrbova sukcesijska grmišča na s hranili bogatih sprsteninastih tleh na gozdnih čistinah (posekah) v srednji Evropi | | |

| | | | |
|---|--------|-------------------------|--|
| Seral elder and willow scrub of nutrient-rich mull soils of forest clearings fo Central Europe | | | |
| <i>Rubetum idaei</i> Gams 1927 | 38BC01 | 12 | |
| <i>Sambucetum racemosae</i> Oberd. 1973 | 38BC02 | 2 | |
| Združba na nivoju razreda | | | |
| Other community of the class | | | |
| <i>Cornus sanguinae</i> - [<i>Rhamno-Prunetea</i>] | 38XX01 | 10 | |
| Carpino-Fagetea Passarge in Passarge & Hofmann 1968 | 39 | | |
| Mezofilni listopadni in mešani gozdovi na evtrofnih tleh v zmernem pasu Evrope, Anatolije, Kavkaza, Urala in južne Sibirije | | | |
| Mesic deciduous and mixed forests on eutrophic soils of temperate Europe, Anatolia, Caucasus, Urals and southern Siberia | 39A | 2 | |
| Fagetalia sylvaticae Walas 1933 | | | |
| Bukovi gozdovi na s hranili bogatih tleh Evrope | | | |
| Beach forests of nutrient-rich soils of Europe | 39AB | | |
| Aremonio-Fagion Török et al. ex Marinček et al. 1993 | | | |
| Bukovi in mešani bukovo-jelovi gozdovi v Ilirskem območju in zahodnih Dinaridih | | | |
| Beech and mixed beech-fir forests of the Illyrian region and western Dinarides | 39AB01 | 224 | |
| <i>Hacquetio-Fagetum</i> Ž. Košir ex Horvat et al. 1974 | | | |
| (incl. <i>Hedero-Fagetum</i> Ž. Košir 1994) | | | |
| <i>Vicio oroboidi-Fagetum</i> (Horvat 1938) Pócs & Borhidi in Borhidi 1960 | 39AB02 | 72 | |
| <i>Polysticho setiferi-Fagetum</i> Zupancič et al. 2001 | 39AB03 | 16 | |
| (syn. <i>Festuco drymeiae-Fagetum</i> Magic 1968 sensu Cimpešek 1988) | | | |
| <i>Ornithogalo pyrenaici-Fagetum</i> Marinček et al. 1990 | 39AB04 | 92 | |
| <i>Lamio orvalae-Fagetum</i> (Horvat 1938) Borhidi 1963 | 39AB05 | 239 | |
| <i>Arunco-Fagetum</i> Ž. Košir ex Horvat et al. 1974 | 39AB06 | 45 | |
| <i>Isopyro-Fagetum</i> Ž. Košir ex Horvat et al. 1974 | 39AB07 | 53 | |
| <i>Cardamini savensi-Fagetum</i> Ž. Košir ex Willner 2002 | 39AB08 | 139 | |
| <i>Omphalodo-Fagetum</i> (Tregubov 1957) Marinček et al. 1993 | 39AB09 | 529 | |
| <i>Polysticho lonchitis-Fagetum</i> (Horvat 1938) Marinček in Poldini et Nardini 1993 | 39AB10 | 58 | |
| <i>Anemone trifoliae-Fagetum</i> Tregubov 1962 | 39AB11 | 129 | |
| <i>Stellario glochidispermae-Fagetum</i> (Zupancič 1969) Marinček et al. 1993 | 39AB12 | 3 | |
| <i>Ranunculo plataniifolii-Fagetum</i> Marinček et al. 1993 | 39AB13 | 257 | |
| <i>Aconito paniculati-Fagetum</i> (Zupancič 1969) Marinček et al. 1993 | 39AB14 | 2 | |
| <i>Homogyno sylvestris-Fagetum</i> Marinček et al. 1993 | 39AB15 | 403 | |
| <i>Ostryo-Fagetum</i> M. Wraber ex Trinajstić 1972 | 39AB16 | 103 | |
| <i>Seslerio autumnalis-Fagetum</i> (Horvat 1950) M. Wraber ex Borhidi 1963 | 39AB17 | 236 | |
| <i>Rhododendro hirsuti-Fagetum</i> Accetto ex Dakskobler 1998 | 39AB18 | 163 | |
| <i>Allio victorialis-Fagetum</i> Tomažič ex Accetto 2002 nom. inval. | 39AB19 | 23 | |
| <i>Tanacetum clusii-Fagetum</i> Accetto 2002 nom. inval. | 39AB20 | 1 | |
| <i>Carici pendulae-Fagetum</i> Ž. Košir 2007 nom. nud. | 39AB21 | unpubl. (Ž. Košir 2007) | |
| <i>Rusco hypoglossi-Fagetum</i> Ž. Košir 2007 nom. nud. | 39AB22 | unpubl. (Ž. Košir 2007) | |

| | | |
|---|--------|-------------------------------------|
| <i>Aconito lycoctoni-Fagetum</i> Accetto 1999 nom. nud. | 39AB23 | unpubl. (Accetto 1999) |
| <i>Astrantio majoris-Fagetum</i> Accetto 1999 nom. nud. | 39AB24 | unpubl. (Accetto 1999) |
| <i>Hemerocallido lilio-asphodelo-Ostryetum</i> Poldini 1982 | 39AB25 | unpubl. (Daksobler & Čušin 2003) |
| <i>Festuco drymeiae-Abietetum</i> Vukelić & Baričević 2007 | 39AB26 | unpubl. (Daksobler & Marinšek 2009) |
| <i>Festuco-Abietetum</i> Ž. Košir 2010 nom. inval. | 39AB27 | unpubl. (Ž. Košir 2010) |
| <i>Clematido-Abietetum</i> Ž. Košir 2010 nom. inval. | 39AB28 | unpubl. (Ž. Košir 2010) |
| <i>Sorbo ariae-Abietetum</i> Ž. Košir 2010 nom. inval. | 39AB29 | unpubl. (Ž. Košir 2010) |
| <i>Homogyno sylvestris-Abietetum</i> Ž. Košir 2010 nom. inval. | 39AB30 | unpubl. (Ž. Košir 2010) |
| <i>Lycopodio-Abietetum</i> Ž. Košir 2010 nom. inval. | 39AB31 | unpubl. (Ž. Košir 2010) |
| Quercu-Carpinetalia Moor 1976 | 39B | |
| Hrastovo-gabrovi gozdovi na globokih, s hranili bogatih tleh Evrope | | |
| Oak-hornbeam woods on deep nutrient-rich soils of Europe | | |
| Erythronio-Carpinion (Horvat 1958) Marinček in Wallnöfer et al. 1993 | 39BB | |
| (incl. <i>Fraxino pannonicae-Carpinion</i> betuli. Accetto 2006) | | |
| Termofilni ilirski in severno italijanski hrastovo-gabrovi gozdovi | | |
| Thermophilous Illyrian and northern Italian oak-hornbeam woods | | |
| <i>Pseudostellario-Carpinetum betuli</i> Accetto 1973 | 39BB01 | 27 |
| <i>Carici albae-Tiliatum cordatae</i> Müller & Görs 1958 | 39BB02 | 2 |
| <i>Asperulo odoratae-Carpinetum</i> M. Wraber 1969 | 39BB03 | 12 |
| <i>Helleboro nigri-Carpinetum</i> Marinček in Wallnöfer et al. 1993 | 39BB04 | 15 |
| <i>Carici umbrosae-Quercetum petraeae</i> Poldini in Marinček 1994 | 39BB05 | 26 |
| <i>Carici albae-Carpinetum betuli</i> Čušin 2002 | 39BB06 | 67 |
| <i>Vaccinio myrtilli-Carpinetum</i> (M. Wraber 1969) Marinček 1994 | 39BB07 | 74 |
| <i>Abio albae-Carpinetum betuli</i> Marinček 1994 | 39BB08 | 48 |
| <i>Pruno padi-Carpinetum betuli</i> (Marinček & Zupančič 1982) Marinček 1994 | 39BB09 | 14 |
| <i>Seslerio autumnalis-Carpinetum betuli</i> Zupančič 1997 nom. nud. | 39BB10 | 1 |
| <i>Ornithogalo pyrenaici-Carpinetum betuli</i> Marinček et al. in Marinček 1994 | 39BB11 | 116 |
| <i>Asaro-Carpinetum betuli</i> Lausi 1964 | 39BB12 | 20 |
| <i>Epimedio-Carpinetum</i> (Horvat 1938) Borhidi 1963 | 39BB13 | unpubl. (Marinček) |
| <i>Fraxino pannonicae-Carpinetum betuli</i> Soó & Borhidi 1962 | 39BB14 | unpubl. (Accetto 2006) |
| Aceretalia pseudoplatani Moor 1976 | 39C | |
| Zmerni in submediteranski javorjevi gozdovi na meliščih v zmernem pasu Evrope | | |
| Temperate and submediterranean maple scree forests of temperate Europe | | |
| Tilio-Acerion Klika 1955 | 39CA | |
| Submontanski javorjevo lipovi gozdovi na strmih pobočjih z milo in vlažno mezo klimo v zahodni in srednji Evropi (v Sloveniji tudi v montanskem in altimontanskem pasu) | | |
| Submontane maple-lime forests on steep slopes with a mild and humid mesoclimate of Western and Central Europe | | |
| <i>Corydalido cavae-Aceretum pseudoplatani</i> Moor 1938 | 39CA01 | 2 |
| <i>Hacquetio-Fraxinetum</i> Marinček in Wallnöfer et al. 1993 | 39CA02 | 84 |
| <i>Arunco-Aceretum pseudoplatani</i> Moor 1952 | 39CA03 | 10 |

| | | |
|---|--------|------------------------|
| <i>Ulmus-Aceretum</i> Berger 1922 | 39CA04 | 36 |
| <i>Lamio orvalae-Aceretum</i> P. Košir & Marinček 1999 | 39CA05 | 48 |
| <i>Omphalodo vernae-Aceretum</i> P. Košir & Marinček 1999 | 39CA06 | 30 |
| <i>Dentario polyphyllae-Aceretum</i> P. Košir & Marinček 1999 | 39CA07 | 90 |
| <i>Saxifrago petraeae-Tilietum</i> Dakskobler 1999 | 39CA08 | 111 |
| <i>Corydalis ochroleucae-Aceretum</i> Accetto 1991 | 39CA09 | 35 |
| <i>Dryopterido affini-Aceretum</i> P. Košir 2005 | 39CA10 | 43 |
| <i>Tilio cordatae-Aceretum pseudoplatni</i> Ž. Košir 1954 (syn. <i>Ostrya-Tilietum</i> Ž. Košir 1954) | 39CA11 | 20 |
| <i>Paeonio officinalis-Tilietum platyphylli</i> P. Košir & Surina 2005 | 39CA12 | 19 |
| <i>Veronico sublobatae-Fraxinetum</i> Dakskobler 2006 nom. inval. | 39CA13 | 7 |
| <i>Veratro nigri-Fraxinetum excelsioris</i> Dakskobler 2007 | 39CA14 | 196 |
| <i>Ornithogalo pyrenaici-Fraxinetum</i> Čušin & Dakskobler ex Dakskobler 2007 | 39CA15 | 25 |
| <i>Lamio orvalae-Fraxinetum excelsioris</i> Ž. Košir 2009 nom. prov. | 39CA16 | 15 |
| <i>Cardamino enneaphylli-Aceretum</i> Ž. Košir 2009 nom. prov. | 39CA17 | 13 |
| | | |
| Quercetea pubescentis Doing-Kraft ex Scamoni & Passarge 1959 | 40 | |
| Toploljubni hrastovi in iglasti gozdovi v polsuhih območjih južne in vzhodne Evrope in Anatolije | | |
| Thermophilous oak and conifer woodlands of semi-dry regions in Southern and Eastern Europe and Anatolia | | |
| Fraxino orni-Cotinetalia Jakus 1961 | 40A | |
| Toplojubne zastorne družbe, psevdomakija in šibljak, ki tvorijo rob grmičastih hrastovih gozdov v submediteranski regiji jugovzhodne Evrope | | |
| Thermophilous mantle, pseudomaquis and šibljak fringing oak forests of submediterranean regions of south-eastern Europe | | |
| Rhamno-Paliurion Trinajstić (1978) 1996 | 40AA | |
| Submediteranski šibljak na vzhodni jadranski obali Balkanskega polotoka | | |
| Submediterranean šibljak of the eastern Adriatic coasts of the Balkan Peninsula | | |
| <i>Rhamno intermediae-Paliuretum</i> (Horvatić 1963) Trinajstić 1995 | 40AA01 | unpubl. (Čarni & Šilc) |
| Quercetalia pubescenti-petraeae Klika 1933 | 40B | |
| Evropski conalni kserotermofilni submediteranski hrastovi in kraškogabrovi gozdovi južne Evrope in subkontinentalni in reliktni iglasti gozdovi v Sredozemlju | | |
| European zonal xero-thermophilous submediterranean oak and hornbeam forests of southern Europe and subcontinental and relic fir-pine forests of the Mediterranean | | |
| Fraxino orni-Ostryion carpinifoliae Tomažič 1940 (syn. <i>Carpinion orientalis</i> Horvat 1958) | 40BA | 8 |
| Objadranski in južno Balkanski termofilni hrastovi in gozdovi črnega gabra na apnencu | | |
| Amphiadriatic and southern Balcanic thermophilous oak hop hornbeam forests on calcareous substrates | | |
| <i>Quercu-Ostryetum carpinifoliae</i> Horvat 1938 | 40BA01 | 53 |
| <i>Seslerio autumnalis-Ostryetum</i> Horvat & Horvatić ex Horvat et al. 1974 | 40BA02 | 80 |
| <i>Aristolochio luteae-Quercetum pubescentis</i> (Horvat 1959) Poldini 2008 | 40BA03 | 107 |
| (syn. <i>Ostryo-Quercetum pubescentis</i> (Horvat 1959) Trinajstić 1977) | | |
| <i>Bromo erecti-Quercetum</i> Zupančič 1997 nom. inval. | 40BA04 | 2 |
| <i>Seslerio autumnalis-Quercetum pubescentis</i> Zupančič 1999 | 40BA05 | 35 |

| | | |
|--|--------|----------------------|
| <i>Amelanchiero-Ostryetum</i> Poldini (1978) 1982 | 40BA06 | 29 |
| <i>Cytisantho-Ostryetum</i> M. Wraber 1961 | 40BA07 | 17 |
| <i>Quercu pubescentis-Carpinetum orientalis</i> Horvatić 1939 | 40BA08 | 10 |
| <i>Corydalis ochroleuca-Ostryetum carpinifoliae</i> Zupancič 1997 nom. inval. | 40BA09 | 1 |
| <i>Erico-Ostryetum</i> Horvat 1959 | 40BA10 | unpubl. (Čarni) |
| <i>Seslerio albicantis-Ostryetum</i> Lausi et al. corr. Poldini & Vidali 1995 | 40BA11 | 50 |
| <i>Rhododendro hirsuti-Ostryetum carpinifoliae</i> Franz 2002 nom. inval. | 40BA12 | 2 |
| <i>Fraxino orni-Ostryetum carpinifoliae</i> Aichinger 1933 | 40BA13 | 3 |
| <i>Sileno glareosae-Ostryetum carpinifoliae</i> Franz 2002 nom. prov. | 40BA14 | unpubl. (Franz 2002) |
| <i>Seslerio autumnalis-Pinetum nigrae</i> Zupancič & Žagar 2008 | 40BA15 | 17 |
| <i>Quercion pubescenti-petraeae</i> Br.-Bl. 1932 nom. mut. | 40BC | |
| Srednjeevropski toploljubni hrastovi gozdovi na apnencu | | |
| Central European calciphilous thermophilous oak forests | | |
| <i>Serratulo tinctoriae-Quercetum petraeae</i> Ht. ex Zupancič & Žagar in Zupancič et al. 2009 (syn. <i>Lathyro nigrae-Quercetum petraeae</i> Horvat (1938) 1958) | 40BC01 | 19 |
| <i>Molinio litoralis-Quercetum pubescentis</i> Šugar et al. 1981 | 40BC02 | 14 |
| <i>Seslerio autumnalis-Quercetum petraeae</i> Poldini (1964) 1982 | 40BC03 | 35 |
| <i>Potentillo albae-Quercetum pubescentis</i> A.O. Horvat 1973 | 40BC04 | 1 |
| <i>Asplenio adianti-nigri-Quercetum petraeae</i> Ž. Košir ex Cimperšek 2008 | 40BC05 | 13 |
| <i>Hacquetio-Quercetum cerris</i> Marinček & Šilc 1999 | 40BC06 | 8 |
| <i>Quercetea roboris</i> Br.-Bl. ex Oberd. 1957 | 41 | |
| Kisloljubni hrastovi, hrastovo-brezovi in bukovi gozdovi na s hranili siromašnih tleh v zahodni, srednji in jugovzhodni Evropi | | |
| Acidophilous oak, oak-birch and beech forests on nutrient-poor soils of Western, Central and southeastern Europe | | |
| <i>Luzulo-Fagetalia</i> Scamoni & Passarge 1959 | 41A | |
| Kisloljubni bukovi gozdovi na s hranili siromašnih tleh v zahodni in srednji Evropi | | |
| Acidophilous beech forests on nutrient-poor soils of Western and Central Europe | | |
| <i>Luzulo-Fagion Lohmeyer et Tx. in Tx. 1954</i> | 41AA | |
| Kisloljubni bukovi gozdovi Evrope | | |
| Acidophilous beech forests of Europe | | |
| <i>Castaneo-Fagetum sylvaticae</i> Marinček & Zupancič (1979) 1995 | 41AA01 | 101 |
| <i>Luzulo-Fagetum sylvaticae</i> Meusel 1937 | 41AA01 | 209 |
| <i>Blechno-Fagetum sylvaticae</i> (Tüxen & Oberd. 1958) Rivas-Martínez 1962 | 41AA01 | 87 |
| <i>Hieracio rotundati-Fagetum</i> Ž. Košir 1994 | 41AA01 | 15 |
| | 41B | |
| <i>Quercetalia roboris</i> Tx. in Barner 1931 | | |
| Kisloljubni hrastovi, hrastovo-brezovi in borovi gozdovi na s hranili siromašnih tleh Evrope | | |
| Acidophilous oak, oak-birch and pine forests on nutrient-poor soils of Europe | | |
| <i>Castaneo-Quercion petraeae</i> Soó 1964 | 41BA | |
| Kisloljubni submediteranski kostanjevo-hrastovi gozdovi Balkana in jugovzhodne Evrope | | |
| Acidophilous submediterranean chestnut-oak forests of the Balkans and south-eastern Europe | | |

| | | | |
|--|--------|-------------------------|--|
| <i>Quercus-Castanetum</i> Horvat 1938 | | | |
| Genisto germanicae-Quercion Neuhäusel et Neuhäuslová-Novotná 1967 | | | |
| Kisljubični suhi hrastovi in hrastovo-brezovi gozdovi v srednji Evropi | | | |
| Acidophilous dry oak and oak-birch forests of Central Europe | | | |
| <i>Leucobryo-Quercetum</i> (Marinček 1973) Marinček & Zupančič 1995 | 41BA01 | unpubl. (Čarni) | |
| <i>Calluno-Quercetum</i> (Marinček 1973) Marinček & Zupančič 1995 | 41BB | | |
| <i>Pteridio-Betuletum</i> Trinajstić & Šugar ex Rauš & Matić 1994 | 41BB01 | 15 | |
| <i>Melampyro vulgati-Quercetum petraeae</i> Puncer & Zupančič 1979 | 41BB02 | 15 | |
| <i>Molinio-Quercetum petraeae</i> Šugar 1972 | 41BB03 | 31 | |
| <i>Thelyptero limbosperae-Quercetum roboris</i> Ž. Košir 1994 nom. nud. | 41BB04 | 38 | |
| <i>Deschampsio flexuosae-Quercetum petraeae</i> Firbas 1928 | 41BB05 | 8 | |
| | 41BB06 | unpubl. (Ž. Košir 1994) | |
| | 41BB07 | unpubl. (Ž. Košir 1994) | |

VEGETACIJA MONTANSKIH RESAV IN GOZDOV IGLAVCEV

Vegetation of montane heathlands and coniferous forests

Erico-Pinetea Horvat 1959

Reliktni montanski borovi gozdovi in sorodna grmišča na apnencu in ultramafičnih substratih na Balkanu, v Alpah, na Karpatih in Krimu

Relict pine forests and related scrub on calcareous and ultramafic substrates of the Balkans, Alps, Carpathians and Crimea

Erico-Pinetalia Horvat 1959

Reliktni montanski borovi gozdovi in grmišča na apnencu na Balkanu, Apeninih, v Alpah in na Karpatih

Montane calcareous relict pine forests of the Balkans, Apennines, Alps and Carpathians

Erico-Pinion sylvestris Br.-Bl. in Br.-Bl. et al. 1936 nom. invers. propos.

Reliktni gozdovi rdečega (in v Sloveniji tudi črnega) bora na apnencu v Alpah in Centralnem Masivu (tudi v severnem delu Dinaridov)

Relict forests of *Pinus sylvestris* on calcareous substrates of the Alps and Massif Central

Molinio litoralis-Pinetum sylvestris Schmid ex Etter 1947 nom. invers. propos.

Brachypodio-Pinetum sylvestris Zupančič & Žagar 1997

Fraxino ornii-Pinetum nigrae Martin-Bosse 1967

Alno incanae-Pinetum sylvestris Poldini 1984

Carici sempervirentis-Pinetum nigrae Accetto (1996) 1999

Daphno alpinae-Pinetum nigrae Accetto 1999

Genisto januensis-Pinetum sylvestris Tomažič 1940

Primulo carniolicae-Pinetum nigrae Accetto 2008

Rhododendro hirsuti-Ericetalia carnea Grabherr et al. 1993

Subalpinske in alpinske prtilikave resave in skrivljena drevesa na kamnitih apnenčastih tleh, skalovju, lapijih (karren) in balvanih v Alpah, na Apeninih in v Dinaridih

Subalpine and alpine dwarf heath and krummholz on rocky calcareous soils, outcrops, lapies (karren) and boulders of the Alps, Apennines and the Dinarides

Ericion carnea Rübhel ex Grabherr et al. 1993

Subalpinske in alpinske prtilikave resave in skrivljena drevesa na kamnitih apnenčastih tleh, skalovju, lapijih (karren) in balvanih v Alpah, na Apeninih in v Dinaridih

Subalpine and alpine dwarf heath and krummholz on rocky calcareous soils, outcrops, lapies (karren) and boulders of the Alps, Apennines and northern Dinarides

| | | |
|--|--------|-------------------------|
| <i>Rhododendretum hirsuti</i> Lüdi 1921 | 42BA01 | 9 |
| <i>Pulsatillo vernalis-Dryadatum octopetalae</i> Dakskobler et al. 2008 | 42BA02 | 14 |
| <i>Rhododendro hirsuti-Juniperetum sibiricae</i> Horvat 1962 | 42BA03 | unpubl. (Surina) |
| | | |
| <i>Betulo carpaticae-Alnetea viridis Rejmánek in Huml et al. 1979</i> | 43 | |
| Subalpínska jelševa in vrbova grmišča in skrivljena drevesa, bogata z zelišči, v subalpinskem pasu v Alpah in na Balkanu | | |
| Subalpine herb-rich alder and willow scrub and krummholz of the subalpine belt of the Alps and the Balkans | 43A | |
| <i>Alnetalia viridis Rübél ex Huml et al. 1979</i> | | |
| Subalpínska jelševa in vrbova grmišča in skrivljena drevesa, bogata z zelišči, v subalpinskem pasu v Alpah in na Balkanu | | |
| Subalpine herb-rich alder and willow scrub and krummholz of the subalpine belt of the Alps and the Balkans | 43AB | |
| <i>Alnion viridis Schnyder 1930</i> | | |
| Subalpínska grmišča zelene jelše na rodovitnih tleh v Alpah in na Balkanu | 43AB01 | 6 |
| Subalpine green alder scrub on fertile soils of the Alps and Balkans | 43AB02 | 11 |
| <i>Alnetum viridis</i> Br.-Bl. 1918 | 43AB03 | unpubl. (Surina) |
| <i>Salicetum waldsteinianae</i> Beger 1922 | 43AB04 | unpubl. (Dakskobler) |
| <i>Salicetum appendiculatae</i> Horvat et al. 1974 | | |
| <i>Aceri-Salicetum appendiculatae</i> Oberdorfer 1957 | | |
| | | |
| <i>Vaccinio-Piceetea Br.-Bl. in Br.-Bl. et al. 1939</i> | 44 | |
| Holarktični iglasti gozdovi na kisljih tleh borealne cone in na višjih nadmorskih višinah orobioma mešanih gozdov | | |
| Holarctic coniferous forests on acidic soils of boreal zone and high-altitudes of nemoral orobiomes | 44A | |
| <i>Piceetalia excelsae Pawłowski in Pawłowski et al. 1928</i> | | |
| Evrazijski boreo-montanski smrekovi, jelovi gozdovi | | |
| Eurasian boreo-montane spruce forests | 44AA | 3 |
| <i>Piceetum excelsae Pawłowski et al. 1928</i> | | |
| Evropski boreomontanski smrekovi in borovi gozdovi na s hranili revnih rastiščih | | |
| European boreo-montane spruce and pine forests of nutrient-poor habitats | 44AA01 | 18 |
| <i>Polysticho setiferi-Abietetum</i> Ž. Košir 1994 | 44AA02 | 42 |
| <i>Prenanthis purpureae-Piceetum</i> Zupančič 1999 | 44AA03 | 119 |
| <i>Rhytidadelpho lorei-Piceetum</i> (M. Wraber 1953) Zupančič 1999 | 44AA04 | 66 |
| <i>Sphagno-Piceetum</i> Kuoch 1954 | 44AA05 | 55 |
| <i>Avenello flexuosae-Piceetum</i> M. Wraber ex Hadač in Hadač et al. 1969 | 44AA06 | 78 |
| <i>Bazzanio-Abietetum</i> M. Wraber 1958 | 44AA07 | 126 |
| <i>Galio rotundifolii-Abietetum</i> M. Wraber 1959 | 44AA08 | 31 |
| <i>Luzulo albidiae-Abietetum</i> Oberd. 1957 | 44AA09 | 90 |
| <i>Luzulo sylvaticae-Piceetum</i> M. Wraber 1963 | 44AA10 | 7 |
| <i>Mastigobryo-Piceetum</i> (Schmidt & Gaisberg 1936) Br.-Bl. & Sissingh in Br.-Bl. et al. 1939 | 44AA11 | 10 |
| <i>Hieracio rotundati-Abietetum</i> Marinček 1995 nom. inval. | 44AA12 | 3 |
| <i>Paraleucobryo longifoliae-Abietetum</i> Belec 2009 nom. ined. | 44AA13 | unpubl. (Ž. Košir 1994) |
| <i>Dryopterido affinis-Abietetum</i> Ž. Košir 1994 nom. inval. | | |

| | | |
|--|--------|-------------------------|
| Abieti-Piceion (Br.-Bl. in Br.-Bl. et al. 1939) Soó 1964 | 44AB | |
| Mezofilni jelovi in smrekovi gozdovi na rjavih gozdnih tleh v gorovjih srednje in jugozahodne Evrope (v Sloveniji tudi na bolj plitvih tleh) | | |
| Mesophilous fir forests on brown forest soils of the Central and southwestern European mountains | | |
| <i>Aposertido-Piceetum</i> Zupancič 1999 | 44AB01 | 32 |
| <i>Asplenio-Piceetum</i> Kuoch 1954 | 44AB02 | 6 |
| <i>Erico-Piceetum</i> Schweingruber 1972 | 44AB03 | 1 |
| <i>Hacquetio-Piceetum</i> Zupancič (1980) 1999 | 44AB04 | 19 |
| <i>Laburno alpini-Piceetum</i> Zupancič 1999 | 44AB05 | 24 |
| <i>Lonicero caeruleae-Piceetum</i> Zupancič 1976 | 44AB06 | 45 |
| <i>Petasiti-Piceetum</i> Zupancič 1999 | 44AB07 | 4 |
| <i>Rhamno fallaci-Piceetum</i> Zupancič 1999 | 44AB08 | 13 |
| <i>Ribeso alpini-Piceetum</i> Zupancič & Accetto 1994 | 44AB09 | 22 |
| <i>Stellario montanae-Piceetum</i> Zupancič (1980) 1999 | 44AB10 | 19 |
| <i>Rhodothamno-Laricetum</i> Willner et Zukrigl 1999 | 44AB11 | 140 |
| <i>Asplenio viridae-Abietetum</i> Ž. Košir 1972 nom. inval. | 44AB12 | unpubl. (Ž. Košir 1994) |
| <i>Sorbo ariae-Abietetum</i> Košir 2000 nom. nud. | 44AB13 | unpubl. (Ž. Košir 2000) |
| Calamagrostio arundinaceae-Abietion Horvat 1962 nom. invers. propos. | 44AC | |
| Igljasti gozdovi z podrastjo visokih zelišč na apnenčastih in dolomitnih balvanih v montanskem pasu zahodnega Balkana | | |
| Coniferous forests with tall-herb undergrowth on limestone and dolomite boulder screes in montane to subalpine belt in western Balkans | | |
| <i>Calamagrostio-Abietetum</i> Horvat (1950) 1962 | 44AC01 | 20 |
| <i>Campanulo justinianae-Piceetum abietis</i> Accetto 2006 | 44AC02 | 17 |
| <i>Neckero-Abietetum</i> Tregubov 1962 | 44AC03 | 16 |
| Chysanthemo rotundifolii-Piceion (Krajina 1933) Brežina & Hadač in Hadač 1962 | 44AD | |
| Z zelišči bogati mezofilni smrekovi gozdovi v srednji in severni Evropi | | |
| Herb-rich mesophilous spruce forests of Central and North European mountains | | |
| <i>Adenostylo glabrae-Piceetum</i> M. Wraber ex Zukrigl 1973 | 44AD01 | 51 |
| (syn. <i>Homogyne sylvestris-Piceetum</i> Exner ex Poldini & Bressan 2007) | | |
| <i>Seslerio albicans-Piceetum</i> Egger 1952 | 44AD02 | 1 |
| Pinetalia sylvestris Oberd. 1957 | 44B | |
| Celinski in borealni borovi gozdovi na s hranili siromašnih in hidromorfnih peščenih tleh | | |
| Continental and boreal pine forests of nutrient-poor and hydromorphic, sandy soils | | |
| Pinion (Libbert 1933) Oberd. 1957 | 44BA | |
| (syn. <i>Dicrano-Pinion</i> (Libbert 1933) Matuszkiewicz 1962) | | |
| Borovi in brinovi gozdovi na kislh peščenih tleh | | |
| European pine and juniper woodlands communities of acidic sandy soils | | |
| <i>Galio rotundifolii-Pinetum</i> Zupancič & Čarni ex Čarni et al. 1992 | 44BA01 | 29 |
| <i>Vaccinio myrtilli-Pinetum</i> Kobenza 1930 | 44BA02 | 79 |

| | | |
|--|--------|---------------------------|
| Roso pendulinae-Pinetea mugo Theurillat in Theurillat et al. 1995 | 45 | |
| Subalpinske združbe skrivljenih dreves v montanskem in subalpinskem pasu mešanih gozdov v gorovjih Evrope | | |
| Subalpine krummholz of the montane to subalpine belts of the nemoral mountain ranges of Europe | | |
| Junipero-Pinetalia mugo Boşcaiu 1971 | 45A | |
| Subalpinske združbe rušja in skrivljenih dreves v gorovjih v subalpinskem pasu mešanih gozdov v gorovjih Evrope | | |
| Subalpine pine krummholz of mountains of the subalpine belt of mountain ranges of Europe | | |
| Pino mugo-Ericion Leibundgut 1948 | 45AB | |
| (syn. <i>Erico-Pinetum mugo</i> Leibundgut 1948 nom. inv. propos.) | | |
| Združbe skrivljenih dreves (krummholz) na apnencu v Alpah, na Karpatih in na severnem Balkanu | | |
| Calcareous krummholz of the Alps, Carpathians and Balkans | | |
| <i>Rhododendro hirsuti-Pinetum prostratae</i> Zöttl 1951 | 45AB01 | 162 |
| (syn. <i>Rhodothamno-Rhododendretum hirsuti</i> (Aichinger 1933) Br.-Bl. & Sissingh in Br.-Bl. et al. 1939, <i>Rhodothamno-Pinetum mugo</i> Zupančič & Žagar 1980) | | |
| <i>Hyperico grisebachii-Pinetum mugo</i> Horvat ex T. Wraber et al. in Zupančič et al. 2004 | 45AB02 | 20 |
| <i>Rhododendro hirsuti-Pinetum mugo</i> T. Wraber in Zupančič et al. 2004 nom. nud. | 45AB03 | 2 |
| <i>Amelanchiero-Pinetum mugo</i> Minghetti in Pedrotti 1994 | 45AB04 | unpubl. (Daxskobler 2004) |
| Molinio-Betuletea pubescentis Passarge et G. Hofmann 1968 | 46 | |
| Aconalni gozdovi in grmišča na mezotrofnih barjih | | |
| Azonal forest and shrubby mesotrophic mires | | |
| Molinio-Betuletalia pubescentis Passarge et G. Hofmann 1968 | 46A | |
| Kisloljubni gozdovi in grmišča na mezotrofnih barjih | | |
| Acidophilous forest and shrub communities of mesotrophic mires | | |
| Betulion pubescentis Lohmeyer et Tx. in Tx. 1955. | 46AA | |
| Kisloljubni gozdovi in grmišča na mokrih rastiščih na mezotrofnih barjih | | |
| Acidophilous forest and shrub communities of wet sites in mesotrophic mires | | |
| <i>Sphagno nemorei-Betuletum pubescentis</i> (Libbert 1933) Passarge 1968 | 46AA01 | 16 |
| <i>Pino sylvestris-Betuletum pubescentis</i> Ellenberg & Klötzli 1972 | 46AA02 | 16 |
| <i>Betulo-Quercetum roboris</i> Martinčič 1987 nom. nud. | 46AA03 | 10 |
| <i>Sphagno palustri-Betuletum pubescentis</i> Martinčič 1987 nom. nud. | 46AA04 | 5 |
| <i>Vaccinio uliginosi-Betuletum pubescentis</i> Libbert 1932 | 46AA05 | 26 |
| <i>Betula pubescens-Picea abies</i> comm. | 46AA06 | 8 |

SREDOZEMSKA VEGETACIJA Vegetation of the mediterranean

SREDOZEMSKA GOZDNA IN GRMIŠČNA VEGETACIJA Vegetation of mediterranean forests and shrublands

***Quercetea ilicis* Br.-Bl. ex A. et O. Bolòs 1950**

Sredozemska makija, sredozemski borovi in hrastovi gozdovi in sorodna sklerofilna grmišča
Mediterranean maquis, mediterranean pine and oak forests and associated sclerophyllous scrub

47

***Quercetalia ilicis* Br.-Bl. ex Molinier 1934**

Vednozeleni, večinoma mezo- in supramediterranski hrastovi in borovi gozdovi ter reliktni lovorovi gozdovi v Sredozemlju
Evergreen, mainly meso- to supramediterranean oak and pine woodlands and relict laurel forests of the Mediterranean

47A

***Quercion ilicis* Br.-Bl. ex Molinier 1934**

Vednozeleni in listopadni gozdovi hrasta prnarja na apnencu v zahodnem Sredozemlju
Evergreen and semideciduous calciphilous kermes oak forests of the Western Mediterranean

47AA

47AA01 2

Fraxino ornii-Quercetum ilicis Horvatić (1956) 1958
(uporabljeno v Sloveniji: *Ostryo-Quercetum ilicis* Trinajstić (1965) 1974)

ACONALNI GOZDOVI IN GRMIŠČA Azonal forests and scrub

***Salicetea purpureae* Moor 1958**

Vrbova grmišča in gozdovi ob nižinskih in gorskih rekah od zmernega do arktičnega pasu Evrope in Grenlandije
Willow scrub and woodland of margins of lowland and mountain rivers of temperate to arctic zones of Europe and in Greenland

48 2

48A

***Salicetalia purpureae* Moor 1958**

Vrbova grmišča in gozdovi ob nižinskih in gorskih rekah od zmernega do arktičnega pasu Evrope in Grenlandije
Willow scrub and woodland of margins of lowland and mountain rivers of temperate to arctic zones of Europe and in Greenland

48AA

***Salicion eleagno-daphnoidis* (Moor 1958) Grass 1993**

Vrbova grmišča na bregovih potokov v montskem in subalpskem pasu v Alpah in Karpatih
Willow scrub of stream banks of the montane to subalpine belts of the Alps and Carpathians

***Salici-Myricaritetum* Moor 1958**

***Salicetum incano-purpureae* Sillinger 1933**

***Salici incanae-Hippophaetum* Br.-Bl. in Volk 1939**

***Salicion albae* Soó 1951**

Vrbova grmišča in gozdovi od nižine do submontanskega pasu na rečnih naplavinah v zmernem pasu Evrope
Willow scrub and woodlands of lowland to sub-montane river alluvia of temperate Europe

48AA01 7

48AA02 81

48AA03 unpubl. (Šilc)

48AB

| | | |
|---|--------|----------------|
| <i>Salicetum albae</i> Issler 1926 | 48AB01 | 99 |
| Salicion triandrae T. Müller & Görs 1958 | 48AC | |
| Vrbova grmišča na najnižjem delu rečnih bregov | | |
| Willow scrub of river banks below levées | | |
| <i>Salicetum triandrae</i> Malcuit ex Noirfalise in Lebrun et al. 1955 | 48AC01 | 36 |
| Združbi na nivoju razreda | | |
| Other communities of the class | | |
| <i>Salix purpurea</i> -[<i>Salicetea purpureae</i>] | 48XX01 | 13 |
| <i>Salix triandra</i> -[<i>Salicetea purpureae</i>] | 48XX02 | 3 |
| Franguletea Doing 1962 nom. conserv. propos. | 49 | |
| Vrbov grez in združbe visokih grmišč zahodne in subatlantske srednje Evrope | | |
| Willow carrs and tall-hedge communities of Western and sub-atlantic Central Europe | | |
| Salicetalia auritae Doing 1962 nom. conserv. propos. | 49A | |
| Vrbov grez in združbe visokih grmišč zahodne in subatlantske srednje Evrope | | |
| Willow carrs and tall-hedge communities of Western and sub-atlantic Central Europe | | |
| Salicion cinereae T. Müller & Görs ex Passarge 1961 | 49AA | |
| Vrbov grez in združbe visokih grmišč zahodne in subatlantske srednje Evrope | | |
| Willow carr communities of Western Europe and sub-atlantic Central Europe | 49AA01 | 28 |
| <i>Salicetum cinereae</i> Zólyomi 1931 | 49AA02 | 1 |
| <i>Frangulo-Salicetum auritae</i> R. Tx. 1937 | | |
| Populetea albae Br.-Bl. 1962 | 50 | |
| Obvodni galerijski gozdovi v evrosibirjski in mediteranski regiji | | |
| Riparian gallery forests of the Eurosiberian and Mediterranean regions | | |
| Fraxinetalia Scamoni et Passarge 1959 | 50A | |
| Obvodni gozdovi na poplavnih ravninah na s hranili bogatih aluvialnih tleh v zmernem in borealnem pasu Evrope | | |
| Floodplain riparian forests on nutrient-rich alluvial soils of temperate and boreal Europe | | |
| Alnion incanae Pawłowski in Pawłowski et al. 1928 | 50AA | |
| Jelševo-jesenovi in hrastovi obvodni gozdovi na s hranili bogatih aluvialnih tleh v srednji in zahodni Evropi | | |
| Alder-ash and oak riparian floodplain forests on nutrient-rich alluvial soils in Central and Western Europe | | |
| <i>Alnetum incanae</i> Lüdi 1921 | 50AA01 | unpubl. (Šilc) |
| <i>Lamio orvalae-Alnetum incanae</i> Dakskobler 2010 | 50AA02 | 67 |
| <i>Lamio orvalae-Salicetum eleagni</i> Dakskobler et al. ex Dakskobler 2007 | 50AA03 | 94 |
| <i>Stellario-Alnetum glutinosae</i> Lohm. 1956 | 50AA04 | 12 |
| <i>Piceo abietis-Quercetum roboris</i> (M. Wraber 1969) Marinček 1994 | 50AA05 | 10 |
| <i>Carici remotae-Fraxinetum</i> W. Koch 1926 ex Faber 1936 | 50AA06 | unpubl. (Šilc) |
| Alno-Quercion roboris Horvat 1950 | 50AB | |
| Jelševo-hrastovi obvodni gozdovi na s hranili bogatih aluvialnih tleh v zmernem pasu Balkanskega polotoka | | |

Alder oak riparian floodplain forests on nutrient rich alluvial soil of temperate regions of Balkan Peninsula

| | | |
|--|--------|-----------------------------|
| <i>Pruno padi-Fraxinetum angustifoliae</i> Čarni et al. 2008 nom. nud. | 50AA03 | unpubl. (Čarni et al. 2008) |
| <i>Fraxino-Populetum</i> Jurko 1958 | 50AA04 | 98 |
| <i>Fraxino-Ulmctum effusae</i> Slavnić 1952 | 50AA08 | unpubl. (Čarni et al. 2008) |
| <i>Carici brizoidis-Alnetum glutinosae</i> Horvat 1938 | 50AB01 | 7 |
| <i>Leucojo-Fraxinetum angustifoliae</i> Glavač 1959 | 50AB02 | 4 |
| <i>Pseudostellario-Quercetum roboris</i> Accetto 1973 | 50AB03 | 17 |
| <i>Genisto elatae-Quercetum roboris</i> Horvat 1938 | 50AB04 | unpubl. (Čarni et al. 2008) |
| <i>Lonicero caprifolii-Quercetum roboris</i> (Rauš 1979) Marinček 1994 | 50AB06 | unpubl. (Marinček 1994) |
| <i>Aconito variegati-Quercetum roboris</i> Accetto 1999 nom. nud. | 50AB07 | 1 |
| <i>Epimedio-Quercetum roboris</i> Accetto 1999 nom. nud. | 50AB08 | 1 |

***Alnetea glutinosae* Br.-Bl. et Tx. 1943**

Evropski jelšev grez

European alder carr forests

***Alnetalia glutinosae* R. Tx. 1937**

Evropski jelšev grez

European alder carr forests

***Alnion glutinosae* Malcuit 1929**

Evropski redno poplavljen jelšev grez

European regularly flooded alder carr forests

Carici elongatae-Alnetum glutinosae W. Koch 1926

Alnetum glutinosae s. lat.

(incl. *Carici randalpiniae-Alnetum* Martinčić 2007 nom. inval.)

| | |
|--------|-----------------------------|
| 50AA03 | unpubl. (Čarni et al. 2008) |
| 50AA04 | 98 |
| 50AA08 | unpubl. (Čarni et al. 2008) |
| 50AB01 | 7 |
| 50AB02 | 4 |
| 50AB03 | 17 |
| 50AB04 | unpubl. (Čarni et al. 2008) |
| 50AB06 | unpubl. (Marinček 1994) |
| 50AB07 | 1 |
| 50AB08 | 1 |

51

51A

51AA

51AA01

51AA01

63

12